

公司简介

COMPANY INTRODUCTION



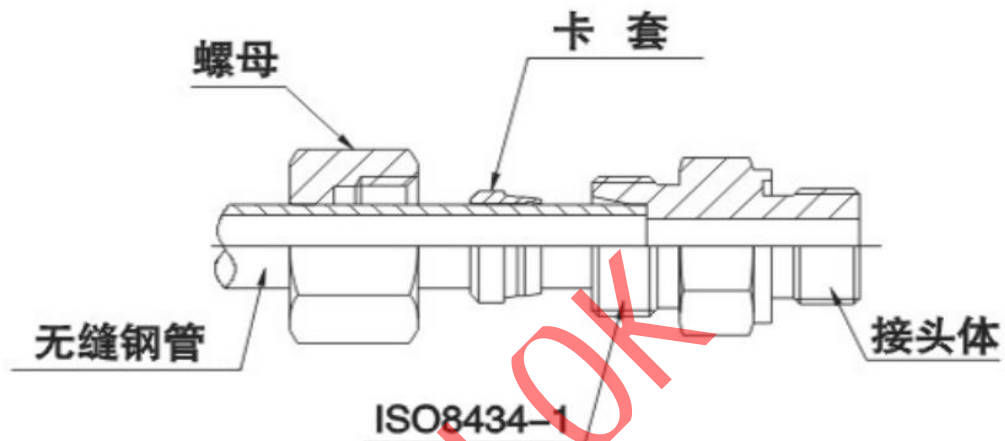
上海富赫机械设备有限公司 是一家专业从事仪表双卡套接头、液压及各种阀门的技术选型、安装及服务一体的销售公司。
FH-LOK 产品广泛用于：液压、氢能源设备、微电子、燃料电池、半导体设备、压缩天然气设备、冶金设备、环保设备、发泡设备、清洗设备、塑料模具、船舶设备、钢铁、机床、风电、工业炉、造纸、消防、石油化工、科研实验室和生物制药等领域。为客户提供超高品质输送系统的应用材料供应，同时还为客户定制非标阀门和特殊管件，第一时间为客户排忧解难！

卡套接头概述

自 30 年代初埃米托 (Ermeto) 在德国发明卡套式管接头以来，卡套式管接头因其特有的装配方便（仅需两把扳手）而广受欢迎。卡套技术发展到今天，结构上做了较大的改进，技术性有了显著的提高，广泛应用于世界工业的各大领域。

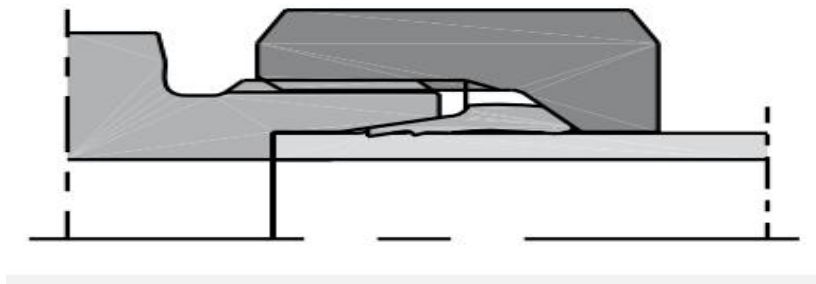
卡套接头由三部分组成：接头体、卡套、螺母。当卡套和螺母套在钢管上插入接头体后，旋紧螺母，卡套前端外侧与接头体锥面贴合，内刃均匀咬入无缝钢管，形成有效密封。

如下图所示：



卡套接头为流体系统和控制系统提供了管路元件之间的可靠连接与密封，主要取决于现代卡套独特的内部结构。

如下图所示：



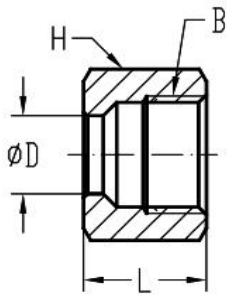
富赫公司使用的卡套为进口的双刃卡套，属于渐进式卡套。此种卡套结构简单，密封性可靠，使用方便，制造精良，外形轻巧美观。卡套特殊的设计、材料和热处理工艺使卡套具有特别优良的弹性。接头装配后卡套中部应微微拱起，由此产生的弹性效应避免了金属接触密封的应力松弛现象，从而可确保卡套长期地可靠工作和反复多次拆装使用。

L/S 卡套接头的系列选择

	L 系列	S 系列
订货示例	E2403-08L-08L	E2403-08S-08S
设计系列	轻型	重型
压力 额定工作压力 (Bar) 最大工作压力 (Bar) 重载应用的通用性	160-315 250-500 很好	315-630 400-800 极好
配管尺寸	6、8、10、12、15、18、22、 28、35、42	6、8、10、12、14、16、20、 25、30、38
装配 拧紧力矩 装配空间	一般 小	大 大
典型应用	机床 运输机械 工程机械 造纸机械 化工机械 用于一般液压气动系统	液压压力机 注塑机械 冶金机械 船舶机械 工程机械 用于重载液压系统

高精度冷拔无缝钢管尺寸表

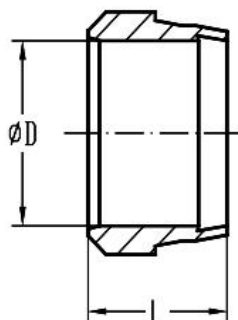
配管 外径 (mm)	公差	壁厚 (mm)	管子 内径 (mm)	设计 工作 压力 (bar)	配管 外径 (mm)	公差	壁厚 (mm)	管子 内径 (mm)	设计 工作 压力 (bar)			
4	±0.1	1	2	502	20	±0.0 8	1.5	17	191			
6	±0.1	1	4	374			2	16	249			
		1.5	3	528			2.5	15	305			
		2	2	665			3	14	358			
8	±0.1	2.5	2	665	3.5	13	410	22	±0.0 8	1.5	19	174
		1	6	289	2	18	228					
		1.5	5	414	2.5	17	280					
		2	4	528	3	16	329					
10	±0.1	2.5	3	632	25	±0.0 8	1.5	19	174			
		1	8	249			2	21	202			
		1.5	7	358			2.5	20	249			
		2	6	460			3	19	294			
12	±0.08	2.5	5	553	28	±0.0 8	4	17	379			
		3	4	632			4.5	16	420			
		1	10	210			1.5	25	139			
		1.5	9	305			2	24	180			
		2	8	393			2.5	23	224			
14	±0.08	2.5	7	476	30	±0.0 8	3	22	265			
		3	6	553			4	20	343			
		1	12	182			2	26	171			
		1.5	11	265			2.5	25	210			
		2	10	343			3	24	249			
15	±0.08	2.5	9	417	35	±0.1 5	4	22	323			
		3	8	487			5	20	393			
		1	13	171			2	31	147			
		1.5	12	249			2.5	30	182			
		2	11	323			3	29	216			
16	±0.08	2.5	10	393	38	±0.1 5	4	27	281			
		3	9	460			5	25	343			
		1.5	13	234			3	32	200			
		2	12	305			4	30	261			
18	±0.08	2.5	11	372	42	±0.1 5	5	28	319			
		3	10	435			6	26	375			
		1.5	15	210			2	38	124			
		2	14	274			3	36	182			
18	±0.08	2.5	13	335	42	±0.1 5	4	34	238			
		3	12	393								



卡套螺帽 RETAINING NUTS

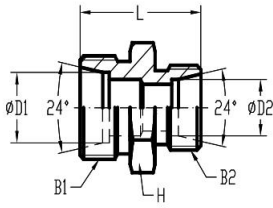
E0318

型号 PART NO.	外径 TUBE O.D	螺纹 THREAD	尺寸 DIMENSIONS		压力等级 Mpa
	D	B	L	H	
E0318-04LL	04	M8X1	11.0	10	10
E0318-06LL	06	M10X1	12.0	12	10
E0318-08LL	08	M12X1	12	14	10
E0318-10LL	10	M14X1	12.5	17	10
E0318-12LL	12	M16X1	13	19	10
E0318-06L	06	M12X1.5	14.5	14	31.5
E0318-08L	08	M14X1.5	14.5	17	31.5
E0318-10L	10	M16X1.5	15.5	19	31.5
E0318-12L	12	M18X1.5	15.5	22	31.5
E0318-15L	15	M22X1.5	17	27	31.5
E0318-18L	18	M26X1.5	18	32	31.5
E0318-22L	22	M30X2	20	36	16
E0318-28L	28	M36X2	21	41	16
E0318-35L	35	M45X2	24	50	16
E0318-42L	42	M52X2	24	60	16
E0318-06S	06	M14X1.5	16.5	17	63
E0318-08S	08	M16X1.5	16.5	19	63
E0318-10S	10	M18X1.5	17.5	22	63
E0318-12S	12	M20X1.5	17.5	24	63
E0318-14S	14	M22X1.5	20.5	27	63
E0318-16S	16	M24X1.5	20.5	30	40
E0318-20S	20	M30X2	24.0	36	40
E0318-25S	25	M36X2	27	46	40
E0318-30S	30	M42X2	29	50	40
E0318-38S	38	M52X2	32.5	60	31.5

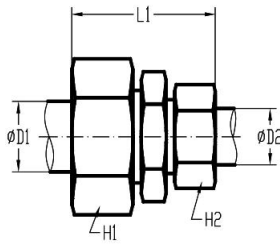


卡套 CUTTING RING

型号 PART NO.	外径 TUBE O.D	尺寸 DIMENSIONS	压力等级 Mpa
	D	L	
0319-04LL	04	6.0	10
0319-06LL	06	7.0	10
0319-08LL	08	7.0	10
0319-10LL	10	7.0	10
0319-12LL	12	7.5	10
E0319-06L	06	9.5	50
E0319-08L	08	9.5	50
E0319-10L	10	10.0	50
E0319-12L	12	10.0	40
E0319-15L	15	10.0	40
E0319-18L	18	10.0	40
E0319-22L	22	10.5	25
E0319-28L	28	11.0	25
E0319-35L	35	13.0	25
E0319-42L	42	13.0	25
E0319-06S	06	9.5	80
E0319-08S	08	9.5	80
E0319-10S	10	10.0	80
E0319-12S	12	10.0	63
E0319-14S	14	10.0	63
E0319-16S	16	10.5	63
E0319-20S	20	12.5	42
E0319-25S	25	12.5	42
E0319-30S	30	13.0	42
E0319-38S	38	13.0	42



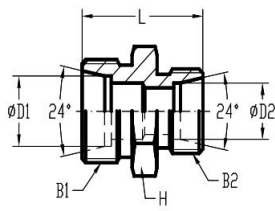
E2403



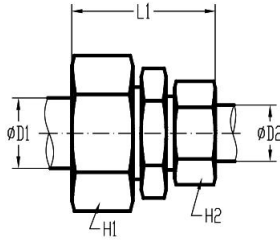
E2403-KN

直通 24°锥/24°锥
UNION 24° CONE/24° CONE

型号 PART NO.	外径 TUBE O.D		螺纹 THREAD		尺寸 DIMENSIONS					压力等级 Mpa
	D1	D2	B1	B2	L	L1	H	H1	H2	
E2403-04LL-04LL	04	04	M8X1	M8X1	20	31	9	10	10	10
E2403-06LL-06LL	06	06	M10X1	M10X1	20	32	11	12	12	10
E2403-08LL-08LL	08	08	M12X1	M12X1	23	35	12	14	14	10
E2403-06L-06L	06	06	M12X1.5	M12X1.5	24	39	12	14	14	31.5
E2403-08L-06L	08	06	M14X1.5	M12X1.5	25	40	14	17	14	31.5
E2403-08L-08L	08	08	M14X1.5	M14X1.5	25	40	14	17	17	31.5
E2403-10L-06L	10	06	M16X1.5	M12X1.5	26	41	17	19	14	31.5
E2403-10L-08L	10	08	M16X1.5	M14X1.5	26	41	17	19	17	31.5
E2403-10L-10L	10	10	M16X1.5	M16X1.5	27	42	17	19	19	31.5
E2403-12L-06L	12	06	M18X1.5	M12X1.5	27	42	19	22	14	31.5
E2403-12L-08L	12	08	M18X1.5	M14X1.5	27	42	19	22	17	31.5
E2403-12L-10L	12	10	M18X1.5	M16X1.5	28	43	19	22	19	31.5
E2403-12L-12L	12	12	M18X1.5	M18X1.5	28	43	19	22	22	31.5
E2403-15L-10L	15	10	M22X1.5	M16X1.5	29	45	24	27	19	31.5
E2403-15L-12L	15	12	M22X1.5	M18X1.5	29	45	24	27	22	31.5
E2403-15L-15L	15	15	M22X1.5	M22X1.5	30	46	24	27	27	31.5
E2403-18L-12L	18	12	M26X1.5	M18X1.5	30	46	27	32	22	31.5
E2403-18L-15L	18	15	M26X1.5	M22X1.5	31	48	27	32	27	31.5
E2403-18L-18L	18	18	M26X1.5	M26X1.5	31	48	27	32	32	31.5
E2403-22L-12L	22	12	M30X2	M18X1.5	32	48	32	36	22	16
E2403-22L-15L	22	15	M30X2	M22X1.5	33	50	32	36	27	16
E2403-22L-18L	22	18	M30X2	M26X1.5	33	50	32	36	32	16
E2403-22L-22L	22	22	M30X2	M30X2	35	52	32	36	36	16
E2403-28L-18L	28	18	M36X2	M26X1.5	34	52	41	41	32	16
E2403-28L-28L	28	28	M36X2	M36X2	36	54	41	41	41	16
E2403-35L-22L	35	22	M45X2	M30X2	39	59	46	50	36	16
E2403-35L-28L	35	28	M45X2	M36X2	39	59	46	50	41	16
E2403-35L-35L	35	35	M45X2	M45X2	41	63	46	50	50	16



E2403

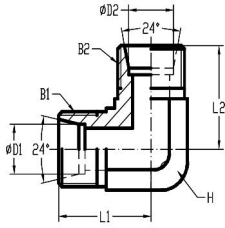


E2403-KN

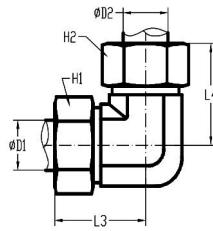
直通 24°锥/24°锥
UNION 24° CONE/24° CONE

型号 PART NO.	外径 TUBE O.D		螺纹 THREAD		尺寸 DIMENSIONS					压力等级 Mpa
	D1	D2	B1	B2	L	L1	H	H1	H2	
E2403-42L-42L	42	42	M52X2	M52X2	43	66	55	60	60	16
E2403-06S-06S	06	06	M14X1.5	M14X1.5	30	45	14	17	17	63
E2403-08S-08S	08	08	M16X1.5	M16X1.5	32	47	17	19	19	63
E2403-10S-06S	10	06	M18X1.5	M14X1.5	32	48	19	22	17	63
E2403-10S-08S	10	08	M18X1.5	M16X1.5	32	48	19	22	19	63
E2403-10S-10S	10	10	M18X1.5	M18X1.5	32	49	19	22	22	63
E2403-12S-06S	12	06	M20X1.5	M14X1.5	34	50	22	24	17	63
E2403-12S-08S	12	08	M20X1.5	M16X1.5	34	50	22	24	19	63
E2403-12S-10S	12	10	M20X1.5	M18X1.5	34	51	22	24	22	63
E2403-12S-12S	12	12	M20X1.5	M20X1.5	34	51	22	24	24	63
E2403-14S-10S	14	10	M22X1.5	M18X1.5	36	54	24	27	22	63
E2403-14S-12S	14	12	M22X1.5	M20X1.5	36	54	24	27	24	63
E2403-14S-14S	14	14	M22X1.5	M22X1.5	38	57	24	27	27	63
E2403-16S-10S	16	10	M24X1.5	M18X1.5	36	54	27	30	22	40
E2403-16S-12S	16	12	M24X1.5	M20X1.5	36	54	27	30	24	40
E2403-16S-16S	16	16	M24X1.5	M24X1.5	38	57	27	30	30	40
E2403-20S-10S	20	10	M30X2	M18X1.5	40	60	32	36	22	40
E2403-20S-12S	20	12	M30X2	M20X1.5	40	60	32	36	24	40
E2403-20S-16S	20	16	M30X2	M24X1.5	42	63	32	36	30	40
E2403-20S-20S	20	20	M30X2	M30X2	44	66	32	36	36	40
E2403-25S-16S	25	16	M36X2	M24X1.5	46	68	41	46	30	40
E2403-25S-20S	25	20	M36X2	M30X2	48	71	41	46	36	40
E2403-25S-25S	25	25	M36X2	M36X2	50	74	41	46	46	40
E2403-30S-20S	30	20	M42X2	M30X2	50	74	46	50	36	40
E2403-30S-25S	30	25	M42X2	M36X2	52	77	46	50	46	40
E2403-30S-30S	30	30	M42X2	M42X2	54	80	50	50	50	40
E2403-38S-30S	38	30	M52X2	M42X2	59	87	55	60	50	31.5
E2403-38S-38S	38	38	M52X2	M52X2	61	90	55	60	60	31.5

注：如需带卡套及卡套螺母整套订货，请在型号后加 KN,如：E2403-06L-06L/KN



E2500



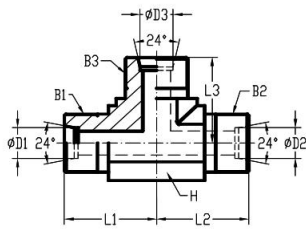
E2500-KN

90°弯 24°锥/24°锥

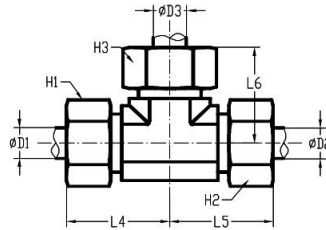
90° ELBOW 24° CONE/24° CONE

型号 PART NO.	外径 TUBE O.D		螺纹 THREAD		尺寸 DIMENSIONS							压力 等级 Mpa
	D1	D2	B1	B2	L1	L2	L3	L4	H	H1	H2	
E2500-04LL-04LL	04	04	M8X1	M8X1	15	15	21	21	9	10	10	10
E2500-06LL-06LL	06	06	M10X1	M10X1	15	15	21	21	9	12	12	10
E2500-08LL-08LL	08	08	M12X1	M12X1	17	17	23	23	12	14	14	10
E2500-06L-06L	06	06	M12X1.5	M12X1.5	19	19	27	27	12	14	14	31.5
E2500-08L-08L	08	08	M14X1.5	M14X1.5	21	21	29	29	12	17	17	31.5
E2500-10L-10L	10	10	M16X1.5	M16X1.5	22	22	30	30	14	19	19	31.5
E2500-12L-12L	12	12	M18X1.5	M18X1.5	24	24	32	32	17	22	22	31.5
E2500-15L-15L	15	15	M22X1.5	M22X1.5	28	28	36	36	19	27	27	31.5
E2500-18L-18L	18	18	M26X1.5	M26X1.5	31	31	40	40	24	32	32	31.5
E2500-22L-22L	22	22	M30X2	M30X2	35	35	44	44	27	36	36	16
E2500-28L-28L	28	28	M36X2	M36X2	38	38	47	47	36	41	41	16
E2500-35L-35L	35	35	M45X2	M45X2	45	45	56	56	41	50	50	16
E2500-42L-42L	42	42	M52X2	M52X2	51	51	63	63	50	60	60	16
E2500-06S-06S	06	06	M14X1.5	M14X1.5	23	23	31	31	12	17	17	63
E2500-08S-08S	08	08	M16X1.5	M16X1.5	24	24	32	32	14	19	19	63
E2500-10S-10S	10	10	M18X1.5	M18X1.5	25	25	34	34	17	22	22	63
E2500-12S-12S	12	12	M20X1.5	M20X1.5	29	29	38	38	17	24	24	63
E2500-14S-14S	14	14	M22X1.5	M22X1.5	30	30	40	40	19	27	27	63
E2500-16S-16S	16	16	M24X1.5	M24X1.5	33	33	43	43	24	30	30	40
E2500-20S-20S	20	20	M30X2	M30X2	37	37	48	48	27	36	36	40
E2500-25S-25S	25	25	M36X2	M36X2	42	42	54	54	36	46	46	40
E2500-30S-30S	30	30	M42X2	M42X2	50	50	62	62	41	50	50	40
E2500-38S-38S	38	38	M52X2	M52X2	57	57	72	72	50	60	60	31.5

注：如需带卡套及卡套螺母整套订货，请在型号后加 KN,如：E2500-06L-06L/KN



E2603

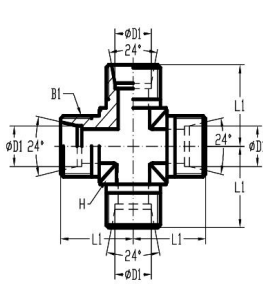


E2603-KN

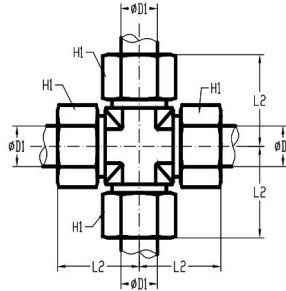
三通 24°锥/24°锥/24°锥
UNION TEE 24° CONE/24°
CONE/24° CONE

型号 PART NO.	外径 O.D			尺寸 DIMENSIONS										压力等级
	D1	D2	D3	L1	L2	L3	L4	L5	L6	H	H1	H2	H3	Mpa
E2603-04LL-04LL-04LL	04	04	04	15	15	15	21	21	21	9	10	10	10	10
E2603-06LL-06LL-06LL	06	06	06	15	15	15	21	21	21	9	12	12	12	10
E2603-08LL-08LL-08LL	08	08	08	17	17	17	23	23	23	12	14	14	14	10
E2603-06L-06L-06L	06	06	06	19	19	19	27	27	27	12	14	14	14	31.5
E2603-08L-08L-08L	08	08	08	21	21	21	29	29	29	12	17	17	17	31.5
E2603-10L-10L-10L	10	10	10	22	22	22	30	30	30	14	19	19	19	31.5
E2603-12L-12L-12L	12	12	12	24	24	24	32	32	32	17	22	22	22	31.5
E2603-15L-15L-15L	15	15	15	28	28	28	36	36	36	19	27	27	27	31.5
E2603-18L-18L-18L	18	18	18	31	31	31	40	40	40	24	32	32	32	31.5
E2603-22L-22L-22L	22	22	22	35	35	35	44	44	44	27	36	36	36	16
E2603-28L-28L-28L	28	28	28	38	38	38	47	47	47	36	41	41	41	16
E2603-35L-35L-35L	35	35	35	45	45	45	56	56	56	41	50	50	50	16
E2603-42L-42L-42L	42	42	42	51	52	52	63	63	63	50	60	60	60	16
E2603-06S-06S-06S	06	06	06	23	23	23	31	31	31	12	17	17	17	63
E2603-08S-08S-08S	08	08	08	24	24	24	32	32	32	14	19	19	19	63
E2603-10S-10S-10S	10	10	10	25	25	25	34	34	34	17	22	22	22	63
E2603-12S-12S-12S	12	12	12	29	29	29	38	38	38	17	24	24	24	63
E2603-14S-14S-14S	14	14	14	30	30	30	40	40	40	19	27	27	27	63
E2603-16S-16S-16S	16	16	16	33	33	33	43	43	43	24	30	30	30	40
E2603-20S-20S-20S	20	20	20	37	37	37	48	48	48	27	36	36	36	40
E2603-25S-25S-25S	25	25	25	42	42	42	54	54	54	36	46	46	46	40
E2603-30S-30S-30S	30	30	30	49	49	49	62	62	62	41	50	50	50	40
E2603-38S-38S-38S	38	38	38	57	57	57	72	72	72	50	60	60	60	31.5

注：如需带卡套及卡套螺母整套订货，请在型号后加 KN,如：E2603-06L-06L-06L/KN



E2650

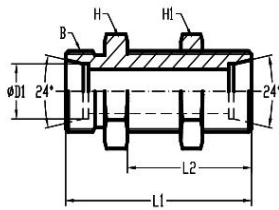


E2650-KN

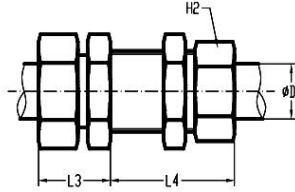
四通 24°锥/24°锥/24°锥/24°锥
UNION CROSS 24° CONE/24° CONE/24°
CONE/24° CONE

型号 PART NO.	外径 TUBE O.D	螺纹 THREAD	尺寸 DIMENSIONS				压力等级 Mpa
	D1	A1	L1	L2	H	H1	
E2650-04LL-04LL-04LL-04LL	04	M8X1	15	21	9	10	10
E2650-06LL-06LL-06LL-06LL	06	M10X1	15	21	9	12	10
E2650-08LL-08LL-08LL-08LL	08	M12X1	17	23	12	14	10
E2650-06L-06L-06L-06L	06	M12X1.5	19	27	12	14	31.5
E2650-08L-08L-08L-08L	08	M14X1.5	21	29	12	17	31.5
E2650-10L-10L-10L-10L	10	M16X1.5	22	30	14	19	31.5
E2650-12L-12L-12L-12L	12	M18X1.5	24	32	17	22	31.5
E2650-15L-15L-15L-15L	15	M22X1.5	28	36	19	27	31.5
E2650-18L-18L-18L-18L	18	M26X1.5	31	40	24	32	31.5
E2650-22L-22L-22L-22L	22	M30X2	35	44	27	36	16
E2650-28L-28L-28L-28L	28	M36X2	38	47	36	41	16
E2650-35L-35L-35L-35L	35	M45X2	45	56	41	50	16
E2650-42L-42L-42L-42L	42	M52X2	51	63	50	60	16
E2650-06S-06S-06S-06S	06	M14X1.5	23	31	12	17	63
E2650-08S-08S-08S-08S	08	M16X1.5	24	32	14	19	63
E2650-10S-10S-10S-10S	10	M18X1.5	25	34	17	22	63
E2650-12S-12S-12S-12S	12	M20X1.5	29	38	17	24	63
E2650-14S-14S-14S-14S	14	M22X1.5	30	40	19	27	40
E2650-16S-16S-16S-16S	16	M24X1.5	33	43	24	30	40
E2650-20S-20S-20S-20S	20	M30X2	37	48	27	36	31.5
E2650-25S-25S-25S-25S	25	M36X2	42	54	36	46	31.5
E2650-30S-30S-30S-30S	30	M42X2	49	62	41	50	31.5
E2650-38S-38S-38S-38S	38	M52X2	57	72	50	60	31.5

注：如需带卡套及卡套螺母整套订货，请在型号后加 KN,如：E2650-06L-06L-06L-06L/KN



E2700

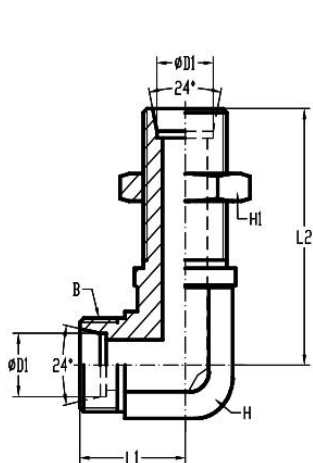


E2700-KN

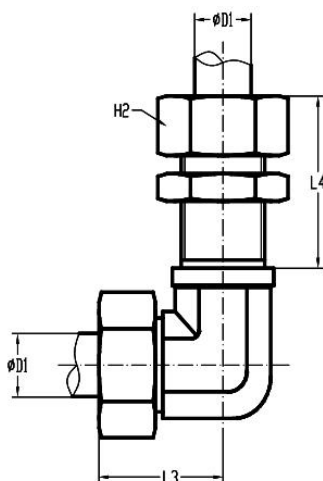
直通隔壁式24°锥/24°锥
BULKHEAD UNION 24° CONE/24° CONE

型号 PART NO.	外径 TUBE O.D		螺纹 THREAD		尺寸 DIMENSIONS							压力 等级 Mpa
	D1	D2	B1	B2	L1	L2	L3	L4	H	H1	H2	
E2700-06L-06L	06	06	M12X1.5	M12X1.5	49	34	23	42	17	17	14	31.5
E2700-08L-08L	08	08	M14X1.5	M14X1.5	49	34	23	42	19	17	17	31.5
E2700-10L-10L	10	10	M16X1.5	M16X1.5	52	35	25	43	22	22	19	31.5
E2700-12L-12L	12	12	M18X1.5	M18X1.5	53	36	25	44	24	24	22	31.5
E2700-15L-15L	15	15	M22X1.5	M22X1.5	57	38	27	46	27	30	27	31.5
E2700-18L-18L	18	18	M26X1.5	M26X1.5	61	40	30	49	32	36	32	31.5
E2700-22L-22L	22	22	M30X2	M30X2	66	42	33	51	36	41	36	16
E2700-28L-28L	28	28	M36X2	M36X2	69	43	35	52	41	46	41	16
E2700-35L-35L	35	35	M45X2	M45X2	76	47	40	58	50	55	50	16
E2700-42L-42L	42	42	M52X2	M52X2	77	47	42	59	60	65	60	16
E2700-06S-06S	06	06	M14X1.5	M14X1.5	55	36	27	44	19	19	17	63
E2700-08S-08S	08	08	M16X1.5	M16X1.5	56	36	28	44	22	22	19	63
E2700-10S-10S	10	10	M18X1.5	M18X1.5	59	37	31	46	24	24	22	63
E2700-12S-12S	12	12	M20X1.5	M20X1.5	60	38	31	47	27	27	24	63
E2700-14S-14S	14	14	M22X1.5	M22X1.5	65	40	35	50	30	30	27	63
E2700-16S-16S	16	16	M24X1.5	M24X1.5	65	40	35	50	32	32	30	40
E2700-20S-20S	20	20	M30X2	M30X2	72	44	39	55	41	41	36	40
E2700-25S-25S	25	25	M36X2	M36X2	79	47	44	59	46	46	46	40
E2700-30S-30S	30	30	M42X2	M42X2	86	51	48	64	50	50	50	40
E2700-38S-38S	38	38	M52X2	M52X2	91	53	53	68	65	65	60	31.5

注：如需带卡套及卡套螺母整套订货，请在型号后加 KN,如：E2700-06L-06L/KN



E2701

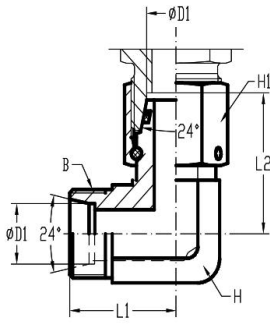


E2701-KN

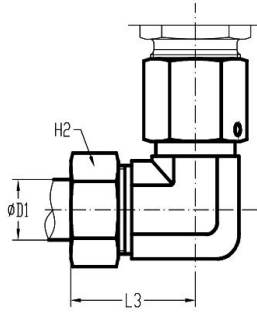
90°弯隔壁式 24°锥/24°锥
BULKHEAD UNION 90°
ELBOW 24° CONE/24° CONE

型号 PART NO.	外径 TUBE O.D	螺纹 THREAD	尺寸 DIMENSIONS							压力等级 Mpa
	D1		B	L1	L2	L3	L4	H	H1	
E2701-06L-06L	06	M12X1.5	19	48	27	42	12	17	14	31.5
E2701-08L-08L	08	M14X1.5	21	51	29	42	12	19	17	31.5
E2701-10L-10L	10	M16X1.5	22	53	30	43	14	22	19	31.5
E2701-12L-12L	12	M18X1.5	24	56	32	44	17	24	22	31.5
E2701-15L-15L	15	M22X1.5	28	61	36	46	22	30	27	31.5
E2701-18L-18L	18	M26X1.5	31	64	40	49	24	36	32	31.5
E2701-22L-22L	22	M30X2	35	72	44	51	27	41	36	16
E2701-28L-28L	28	M36X2	38	77	47	52	36	46	41	16
E2701-35L-35L	35	M45X2	45	86	56	58	41	55	50	16
E2701-42L-42L	42	M52X2	51	90	63	59	50	65	60	16
E2701-06S-06S	06	M14X1.5	23	53	31	44	12	19	17	63
E2701-08S-08S	08	M16X1.5	24	54	32	44	14	22	19	63
E2701-10S-10S	10	M18X1.5	25	57	34	46	17	24	22	63
E2701-12S-12S	12	M20X1.5	29	59	38	47	17	27	24	63
E2701-14S-14S	14	M22X1.5	30	63	40	50	19	30	27	63
E2701-16S-16S	16	M24X1.5	33	64	43	50	24	32	30	40
E2701-20S-20S	20	M30X2	37	74	48	55	27	41	36	40
E2701-25S-25S	25	M36X2	42	81	54	59	36	46	46	40
E2701-30S-30S	30	M42X2	49	90	62	64	41	50	50	40
E2701-38S-38S	38	M52X2	57	96	72	68	50	65	60	31.5

注：如需带卡套及卡套螺母整套订货，请在型号后加 KN,如：E2701-06L-06L/KN



E6500

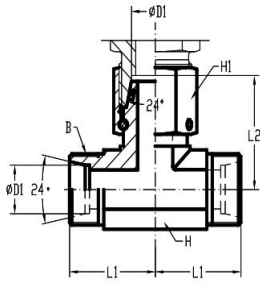


E6500-KN

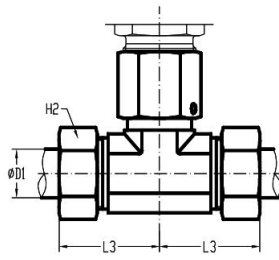
90°弯 24°锥/24°锥旋转螺帽
90° ELBOW 24° CONE/24° CONE
SWIVEL NUT

型号 PART NO.	外径 TUBE O.D	螺纹 THREAD	尺寸 DIMENSIONS						压力等级 Mpa
	D1		B	L1	L2	L3	H	H1	
E6500-06L-06L	06	M12X1.5	21	26	27	12	14	14	31.5
E6500-08L-08L	08	M14X1.5	21	27	29	12	17	17	31.5
E6500-10L-10L	10	M16X1.5	22	29	30	14	19	19	31.5
E6500-12L-12L	12	M18X1.5	24	29.5	32	17	22	22	31.5
E6500-15L-15L	15	M22X1.5	28	32.5	36	19	27	27	31.5
E6500-18L-18L	18	M26X1.5	31	35.5	40	24	32	32	31.5
E6500-22L-22L	22	M30X2	35	38.5	44	27	36	36	16
E6500-28L-28L	28	M36X2	38	41.5	47	36	41	41	16
E6500-35L-35L	35	M45X2	45	51	56	41	50	50	16
E6500-42L-42L	42	M52X2	51	56	63	50	60	60	16
E6500-06S-06S	06	M14X1.5	23	27	31	12	17	17	63
E6500-08S-08S	08	M16X1.5	24	27.5	32	14	19	19	63
E6500-10S-10S	10	M18X1.5	25	30	34	17	22	22	63
E6500-12S-12S	12	M20X1.5	29	31	38	17	24	24	63
E6500-14S-14S	14	M22X1.5	30	35	40	19	27	27	63
E6500-16S-16S	16	M24X1.5	33	36.5	43	24	30	30	40
E6500-20S-20S	20	M30X2	37	44.5	48	27	36	36	40
E6500-25S-25S	25	M36X2	42	50	54	36	46	46	40
E6500-30S-30S	30	M42X2	49	55	62	41	50	50	40
E6500-38S-38S	38	M52X2	57	63	72	50	60	60	31.5

注：如需带卡套及卡套螺母整套订货，请在型号后加 KN,如：E6500-06L-06L/KN



E6600

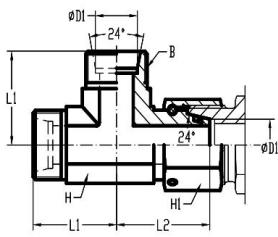


E6600-KN

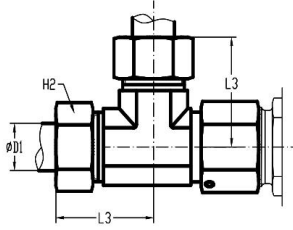
三通 24°锥/24°锥/24°锥旋转螺帽
BRANCH TEE 24° CONE/24° CONE/24°
CONE SWIVEL NUT

型号 PART NO.	外径 TUBE O.D	螺纹 THREAD	尺寸 DIMENSIONS						压力等级 Mpa
	D1		B	L1	L2	L3	H	H1	
E6600-06L-06L	06	M12X1.5	19	26	27	12	14	14	31.5
E6600-08L-08L	08	M14X1.5	21	27.5	29	12	17	17	31.5
E6600-10L-10L	10	M16X1.5	22	29	30	14	19	19	31.5
E6600-12L-12L	12	M18X1.5	24	29.5	32	17	22	22	31.5
E6600-15L-15L	15	M22X1.5	28	32.5	36	19	27	27	31.5
E6600-18L-18L	18	M26X1.5	31	35.5	40	24	32	32	31.5
E6600-22L-22L	22	M30X2	35	38.5	44	27	36	36	16
E6600-28L-28L	28	M36X2	38	41.5	47	36	41	41	16
E6600-35L-35L	35	M45X2	45	51	56	41	50	50	16
E6600-42L-42L	42	M52X2	51	56	63	50	60	60	16
E6600-06S-06S	06	M14X1.5	23	27	31	12	17	17	63
E6600-08S-08S	08	M16X1.5	24	27.5	32	14	19	19	63
E6600-10S-10S	10	M18X1.5	25	30	34	17	22	22	63
E6600-12S-12S	12	M20X1.5	29	31	38	17	24	24	63
E6600-14S-14S	14	M22X1.5	30	35	40	19	27	27	63
E6600-16S-16S	16	M24X1.5	33	36.5	43	24	30	30	40
E6600-20S-20S	20	M30X2	37	44.5	48	27	36	36	40
E6600-25S-25S	25	M36X2	42	50	54	36	46	46	40
E6600-30S-30S	30	M42X2	49	55	62	41	50	50	40
E6600-38S-38S	38	M52X2	57	63	72	50	60	60	31.5

注：如需带卡套及卡套螺母整套订货，请在型号后加 KN,如：E6600-06L-06L/KN



E6602

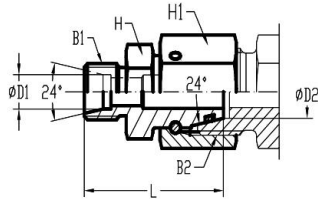


E6602-KN

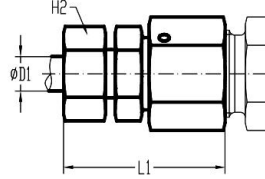
三通 24°锥/24°锥旋转螺母/24°锥
 RUN TEE 24° CONE/24° CONE SWIVEL
 NUT/24° CONE

型号 PART NO.	外径 TUBE O.D	螺纹 THREAD	尺寸 DIMENSIONS						压力等级 Mpa
	D1	B	L1	L2	L3	H	H1	H2	
E6602-06L-06L	06	M12X1.5	19	26	27	12	14	14	31.5
E6602-08L-08L	08	M14X1.5	21	27.5	29	12	17	17	31.5
E6602-10L-10L	10	M16X1.5	22	29	30	14	19	19	31.5
E6602-12L-12L	12	M18X1.5	24	29.5	32	17	22	22	31.5
E6602-15L-15L	15	M22X1.5	28	32.5	36	19	27	27	31.5
E6602-18L-18L	18	M26X1.5	31	35.5	40	24	32	32	31.5
E6602-22L-22L	22	M30X2	35	38.5	44	27	36	36	16
E6602-28L-28L	28	M36X2	38	41.5	47	36	41	41	16
E6602-35L-35L	35	M45X2	45	51	56	41	50	50	16
E6602-42L-42L	42	M52X2	51	56	63	50	60	60	16
E6602-06S-06S	06	M14X1.5	23	27	31	12	17	17	63
E6602-08S-08S	08	M16X1.5	24	27.5	32	14	19	19	63
E6602-10S-10S	10	M18X1.5	25	30	34	17	22	22	63
E6602-12S-12S	12	M20X1.5	29	31	38	17	24	24	63
E6602-14S-14S	14	M22X1.5	30	35	40	19	27	27	63
E6602-16S-16S	16	M24X1.5	33	36.5	43	24	30	30	40
E6602-20S-20S	20	M30X2	37	44.5	48	27	36	36	40
E6602-25S-25S	25	M36X2	42	50	54	36	46	46	40
E6602-30S-30S	30	M42X2	49	55	62	41	50	50	40
E6602-38S-38S	38	M52X2	57	63	72	50	60	60	31.5

注：如需带卡套及卡套螺母整套订货，请在型号后加 KN,如：E6602-06L-06L/KN



E6504

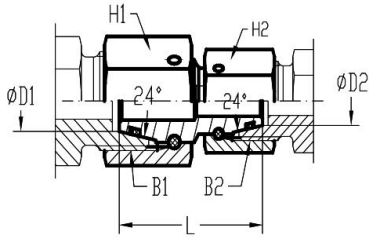


E6504-KN

直通 24°锥/24°锥旋转螺帽
FEMALE CONNECTOR 24°
CONE/24° CONE SWIVEL NUT

型号 PART NO.	外径 TUBE O.D		螺纹 THREAD		尺寸 DIMENSIONS					压力等级 Mpa
	D1	D2	B1	B2	L	L1	H	H1	H2	
E6504-06L-10L	06	10	M12X1.5	M16X1.5	32	40	14	19	14	50
E6504-06L-12L	06	12	M12X1.5	M18X1.5	32	40	17	22	14	40
E6504-08L-10L	08	10	M14X1.5	M16X1.5	32	40	14	19	17	50
E6504-08L-12L	08	12	M14X1.5	M18X1.5	32	40	17	22	17	40
E6504-08L-15L	08	15	M14X1.5	M22X1.5	35.5	43	19	27	17	40
E6504-08L-18L	08	18	M14X1.5	M26X1.5	35	43	24	32	17	40
E6504-10L-12L	10	12	M16X1.5	M18X1.5	32.5	41	17	22	19	40
E6504-10L-15L	10	15	M16X1.5	M22X1.5	36	44	19	27	19	40
E6504-10L-18L	10	18	M16X1.5	M26X1.5	36	44	24	32	19	40
E6504-10L-22L	10	22	M16X1.5	M30X2	40	48	27	36	19	25
E6504-12L-15L	12	15	M18X1.5	M22X1.5	36	44	19	27	22	40
E6504-12L-18L	12	18	M18X1.5	M26X1.5	37	44	24	32	22	40
E6504-12L-22L	12	22	M18X1.5	M30X2	39	48	27	36	22	25
E6504-12L-28L	12	28	M18X1.5	M36X2	42	50	32	41	22	25
E6504-15L-22L	15	22	M22X1.5	M30X2	41	49	27	36	27	25
E6504-15L-28L	15	28	M22X1.5	M36X2	41	51	32	41	27	25
E6504-18L-22L	18	22	M26X1.5	M30X2	41	50	27	36	32	25
E6504-18L-28L	18	28	M26X1.5	M36X2	41	52	32	41	32	25
E6504-18L-35L	18	35	M26X1.5	M45X2	46	55	41	50	32	25
E6504-22L-28L	22	28	M30X2	M36X2	45	54	32	41	36	25
E6504-22L-35L	22	35	M30X2	M45X2	48	57	41	50	41	25
E6504-22L-42L	22	42	M30X2	M52X2	51.5	61	50	60	41	25
E6504-28L-35L	28	35	M36X2	M45X2	48	57	41	50	41	25
E6504-28L-42L	28	42	M36X2	M52X2	51.5	61	50	60	41	25
E6504-35L-42L	35	42	M45X2	M52X2	53.5	65	50	60	50	25

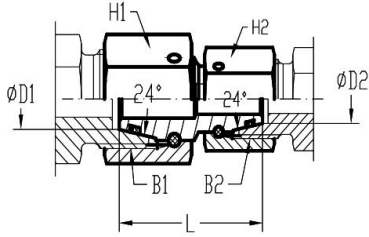
注：如需带卡套及卡套螺母整套订货，请在型号后加 KN,如：E6504-06L-10L/KN



直通 24°锥旋转螺帽/24°锥旋转螺帽
FEMALE CONNECTOR 24° CONE SWIVEL
NUT/24° CONE SWIVEL NUT

E6565

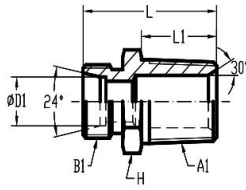
型号 PART NO.	外径 TUBE O.D		螺纹 THREAD		尺寸 DIMENSIONS			压力等级 Mpa
	D1	D2	B1	B2	L1	H1	H2	
E6565-06L-06L	06	06	M12X1.5	M12X1.5	32	14	14	31.5
E6565-08L-08L	08	08	M14X1.5	M14X1.5	35	17	17	31.5
E6565-10L-10L	10	10	M16X1.5	M16X1.5	37	19	19	31.5
E6565-10L-06L	10	06	M16X1.5	M12X1.5	33	19	14	31.5
E6565-10L-08L	10	08	M26X1.5	M14X1.5	33	19	17	31.5
E6565-12L-06L	12	06	M18X1.5	M12X1.5	33	22	14	31.5
E6565-12L-08L	12	08	M18X1.5	M14X1.5	33	22	17	31.5
E6565-12L-10L	12	10	M18X1.5	M16X1.5	33	22	19	31.5
E6565-12L-12L	12	12	M18X1.5	M18X1.5	37	22	22	31.5
E6565-15L-08L	15	08	M22X1.5	M14X1.5	38	27	17	31.5
E6565-15L-10L	15	10	M22X1.5	M16X1.5	38	27	19	31.5
E6565-15L-12L	15	12	M22X1.5	M18X1.5	38	27	22	31.5
E6565-15L-15L	15	15	M22X1.5	M22X1.5	38	27	27	31.5
E6565-18L-12L	18	12	M26X1.5	M18X1.5	36	32	22	31.5
E6565-18L-15L	18	15	M26X1.5	M22X1.5	38	32	27	31.5
E6565-18L-18L	18	18	M26X1.5	M26X1.5	36	32	32	31.5
E6565-22L-22L	22	22	M30X2	M30X2	42	36	36	16
E6565-28L-28L	28	28	M36X2	M36X2	46	41	41	16
E6565-35L-35L	35	35	M45X2	M45X2	48	50	50	16
E6565-42L-42L	42	42	M52X2	M52X2	52	60	60	16



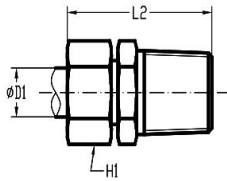
直通 24°锥旋转螺帽/24°锥旋转螺帽
FEMALE CONNECTOR 24° CONE SWIVEL
NUT/24° CONE SWIVEL NUT

E6565

型号 PART NO.	外径 TUBE O.D		螺纹 THREAD		尺寸 DIMENSIONS			压力等级 Mpa
	D1	D2	B1	B2	L	H1	H2	
E6565-06S-06S	06	06	M14X1.5	M14X1.5	32	17	17	63
E6565-08S-08S	08	08	M16X1.5	M16X1.5	38	19	19	63
E6565-10S-10S	10	10	M18X1.5	M18X1.5	33	22	22	63
E6565-10S-06S	10	06	M18X1.5	M14X1.5	33	22	17	63
E6565-10S-08S	10	08	M18X1.5	M16X1.5	33	22	19	63
E6565-12S-06S	12	06	M20X1.5	M14X1.5	36	24	17	63
E6565-12S-08S	12	08	M20X1.5	M16X1.5	36	24	19	63
E6565-12S-10S	12	10	M20X1.5	M18X1.5	36	24	22	63
E6565-12S-12S	12	12	M20X1.5	M20X1.5	40	24	24	63
E6565-16S-10S	16	10	M24X1.5	M18X1.5	39	30	22	40
E6565-16S-12S	16	12	M24X1.5	M20X1.5	39	30	24	40
E6565-16S-16S	16	16	M24X1.5	M24X1.5	43	30	30	40
E6565-20S-12S	20	12	M30X2	M30X2	44	36	24	40
E6565-20S-20S	20	20	M30X2	M30X2	44	36	36	40
E6565-25S-25S	25	25	M36X2	M36X2	46	46	46	40
E6565-30S-30S	30	30	M42X2	M42X2	52	50	50	40
E6565-38S-38S	38	38	M52X2	M52X2	52	60	60	31.5



E2404

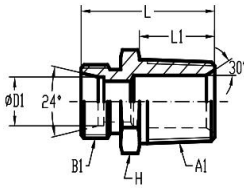


E2404-KN

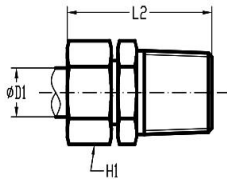
外螺纹连接件 24°锥/NPTF 螺纹
MALE CONNECTOR 24° CONE/NPTF THREAD

型号 PART NO.	外径 TUBE O.D	螺纹 THREAD		尺寸 DIMENSIONS					压力等级 Mpa
	D1	B1	A1 NPT	L	L1	L2	H	H1	
E2404-04LL-1/8NPT	04	M8X1	1/8-27	22	9.65	28	11	10	10
E2404-06LL-1/8NPT	06	M10X1	1/8-27	22	9.65	28	11	12	10
E2404-08LL-1/8NPT	08	M12X1	1/8-27	24	9.65	30	12	14	10
E2404-06L-1/8NPT	06	M12X1.5	1/8-27	24	9.65	32	12	14	31.5
E2404-06L-1/4NPT	06	M12X1.5	1/4-18	30	14.22	38	17	14	31.5
E2404-06L-3/8NPT	06	M12X1.5	3/8-18	30	14.22	38	19	14	31.5
E2404-08L-1/8NPT	08	M14X1.4	1/8-27	25	9.65	33	14	17	31.5
E2404-08L-1/4NPT	08	M14X1.5	1/4-18	30	14.22	38	17	17	31.5
E2404-08L-3/8NPT	08	M14X1.5	3/8-18	30	14.22	38	19	17	31.5
E2404-08L-1/2NPT	08	M14X1.5	1/2-14	36	19.05	44	22	17	31.5
E2404-10L-1/4NPT	10	M16X1.4	1/4-18	31	14.22	39	17	19	31.5
E2404-10L-3/8NPT	10	M16X1.5	3/8-18	32	14.22	40	19	19	31.5
E2404-10L-1/2NPT	10	M16X1.5	1/2-14	37	19.05	45	22	19	31.5
E2404-12L-1/4NPT	12	M18X1.5	1/4-18	32	14.22	40	19	22	31.5
E2404-12L-3/8NPT	12	M18X1.5	3/8-18	32	14.22	40	19	22	31.5
E2404-12L-1/2NPT	12	M18X1.5	1/2-14	37	19.05	45	22	22	31.5
E2404-15L-3/8NPT	15	M22X1.5	3/8-18	33	14.22	41	24	27	31.5
E2404-15L-1/2NPT	15	M22X1.5	1/2-14	38	19.05	46	24	27	31.5
E2404-15L-3/4NPT	15	M22X1.5	3/4-14	39	19.05	47	30	27	31.5
E2404-18L-3/8NPT	18	M26X1.5	3/8-18	34	14.22	43	27	32	31.5
E2404-18L-1/2NPT	18	M26X1.5	1/2-14	39	19.05	48	27	32	31.5
E2404-18L-3/4NPT	18	M26X1.5	3/4-14	39	19.05	48	30	32	31.5
E2404-18L-1NPT	18	M26X1.5	1-11.5	45	23.88	54	36	32	31.5
E2404-22L-3/4NPT	22	M30X2	3/4-14	41	19.05	50	32	36	16
E2404-28L-1NPT	28	M36X2	1-11.5	47	23.88	56	41	41	16
E2404-35L-11/4NPT	35	M45X2	11/4-11.5	51	24.64	62	46	50	16
E2404-42L-11/2NPT	42	M52X2	11/2-11.5	53	25.4	65	55	60	16

注：如需带卡套及卡套螺母整套订货，请在型号后加 KN,如：E2404-06L-1/8NPT/KN



E2404

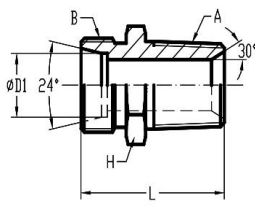


E2404-KN

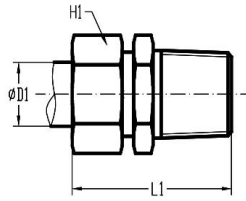
外螺纹连接件 24°锥/NPTF 螺纹
MALE CONNECTOR 24° CONE/NPTF THREAD

型号 PART NO.	外径 TUBE O.D	螺纹 THREAD		尺寸 DIMENSIONS					压力等级 Mpa
	D1	B1	A1 NPT	L	L1	L2	H	H1	
E2404-06S-1/8NPT	06	M14X1.5	1/8-27	28	9.65	36	14	17	63
E2404-06S-1/4NPT	06	M14X1.5	1/4-18	35	14.22	43	17	17	63
E2404-06S-3/8NPT	06	M14X1.5	3/8-18	33	14.22	41	19	17	63
E2404-06S-1/2NPT	06	M14X1.5	1/2-14	42	19.05	50	22	17	63
E2404-08S-1/4NPT	08	M16X1.5	1/4-18	35	14.22	43	17	19	63
E2404-08S-3/8NPT	08	M16X1.5	3/8-18	35	14.22	43	19	19	63
E2404-08S-1/2NPT	08	M16X1.4	1/2-14	42	19.05	50	22	19	63
E2404-10S-1/4NPT	10	M18X1.5	1/4-18	35	9.65	44	19	22	63
E2404-10S-3/8NPT	10	M18X1.5	3/8-18	35	14.22	44	19	22	63
E2404-10S-1/2NPT	10	M18X1.5	1/2-14	42	19.05	50	22	22	63
E2404-10S-3/4NPT	10	M18X1.4	3/4-14	44	19.05	53	30	22	63
E2404-12S-1/4NPT	12	M20X1.5	1/4-18	37	14.22	46	22	24	63
E2404-12S-3/8NPT	12	M20X1.5	3/8-18	37	14.22	46	22	24	63
E2404-12S-1/2NPT	12	M20X1.5	1/2-14	42	19.05	50	22	24	63
E2404-12S-3/4NPT	12	M20X1.5	3/4-14	44	19.05	53	30	24	63
E2404-16S-3/8NPT	16	M24X1.5	3/8-18	39	14.22	49	27	30	40
E2404-16S-1/2NPT	16	M24X1.5	1/2-14	48	19.05	58	32	30	40
E2404-16S-3/4NPT	16	M24X1.5	3/4-14	46	19.05	56	30	30	40
E2404-16S-1NPT	16	M24X1.5	1-11.5	51	23.88	61	36	30	40
E2404-20S-1/2NPT	20	M30X2	1/2-14	48	19.05	59	32	36	40
E2404-20S-3/4NPT	20	M30X2	3/4-14	48	19.05	59	32	36	40
E2404-20S-1NPT	20	M30X2	1-11.5	55	23.88	66	36	36	40
E2404-25S-3/4NPT	25	M36X2	3/4-14	52	19.05	64	41	46	40
E2404-25S-1NPT	25	M36X2	1-11.5	57	23.88	69	41	46	40
E2404-25S-11/4NPT	25	M36X2	11/4-11.5	58	24.64	70	46	46	40
E2404-30S-11/4NPT	30	M42X2	11/4-11.5	60	24.64	74	46	50	40
E2404-38S-11/2NPT	38	M52X2	11/2-11.5	65	25.4	80	55	60	31.5

注：如需带卡套及卡套螺母整套订货，请在型号后加 KN,如：E2404-06S-1/4NPT/KN



E7000

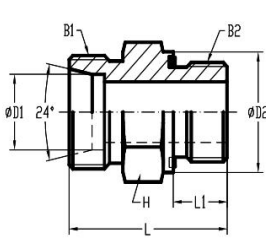


E7000-KN

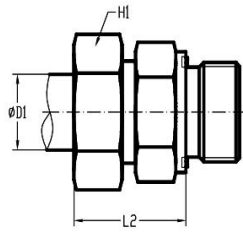
直通 24°锥/NPTF螺纹
MALE CONNECTOR 24° CONE/BSPT

型号 PART NO.	管径 TUBE O.D	螺纹 THREDA		尺寸 DIMENSIONS				压力等级 Mpa
		B	A	L	L1	H	H1	
E7000-04LL-R1/8	04	M8X1	R1/8-28	20	26	11	10	10
E7000-06LL-R1/8	06	M10X1	R1/8-28	20	26	11	12	10
E7000-08LL-R1/8	08	M12X1	R1/8-28	22	28	12	14	10
E7000-08LL-R14	08	M12X1	R1/4-19	26	32	14	14	31.5
E7000-06L-R1/8	06	M12X1.5	R1/8-28	22	30	12	14	31.5
E7000-06L-R1/4	06	M12X1.5	R1/4-19	29	35	17	14	31.5
E7000-08L-R1/8	08	M14X1.5	R1/8-28	23	31	17	17	31.5
E7000-08L-R1/4	08	M14X1.5	R1/4-19	27	35	17	17	31.5
E7000-10L-R1/4	10	M16X1.5	R1/4-19	28	36	17	19	31.5
E7000-12L-R1/4	12	M18X1.5	R1/4-19	29	37	19	22	31.5
E7000-12L-R3/8	12	M18X1.5	R3/8-19	29	37	19	22	31.5
E7000-12L-R1/2	12	M18X1.5	R1/2-14	31	39	24	22	31.5
E7000-15L-R3/8	15	M22X1.5	R3/8-19	30	38	24	27	31.5
E7000-15L-R1/2	15	M22X1.5	R1/2-14	32	40	24	27	31.5
E7000-18L-R1/2	18	M26X1.5	R1/2-14	33	42	27	32	31.5
E7000-22L-R3/4	22	M30X2	R3/4-14	39	46	32	36	31.5
E7000-28L-R1	28	M36X2	R1-11	40	49	41	41	16
E7000-35L-R11/4	35	M45X2	R1-1/4-11	45	56	46	50	16
E7000-42L-R11/2	42	M52X2	R1-1/2-11	49	61	55	60	16

注：如需带卡套及卡套螺母整套订货，请在型号后加 KN,如：E7000-06L-R1/8/KN



E7002-ED

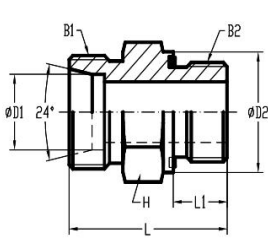


E7002-ED-KN

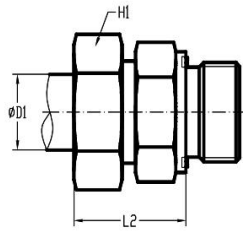
直通 24°锥/BSPP 螺纹胶垫密封柱端
 MALE CONNECTOR 24° CONE/BSPP WITH
 ELASTIC SEAL

型号 PART NO.	外径 TUBE O.D	螺纹 THREAD		尺寸 DIMENSIONS					压力等级 Mpa
	D1	B1	B2	L	L1	L2	H	H1	
E7002-04LL-G1/8-ED	04	M8X1	G1/8-28	20	6.5	19	14	10	10
E7002-06L-G1/8-ED	06	M12X1.5	G1/8-28	23.5	8	23	14	14	31.5
E7002-06L-G1/4-ED	06	M12X1.5	G1/4-19	29	12	25	19	14	31.5
E7002-06L-G3/8-ED	06	M12X1.5	G3/8-19	29.5	12	26	22	14	31.5
E7002-08L-G1/2-ED	08	M14X1.5	G1/2-14	34	14	27	27	17	31.5
E7002-08L-G3/8-ED	08	M14X1.5	G3/8-19	30.5	12	26	22	17	31.5
E7002-08L-G1/4-ED	08	M14X1.5	G1/4-19	29	12	25	19	17	31.5
E7002-08L-G1/8-ED	08	M14X1.5	G1/8-28	24.5	8	24	14	17	31.5
E7002-10L-G1/8-ED	10	M16X1.5	G1/8-28	25.5	8	25	17	19	31.5
E7002-10L-G1/4-ED	10	M16X1.5	G1/4-19	30	12	26	19	19	31.5
E7002-10L-G3/8-ED	10	M16X1.5	G3/8-19	31.5	12	27	22	19	31.5
E7002-10L-G1/2-ED	10	M16X1.5	G1/2-14	35	14	28	27	19	31.5
E7002-12L-G1/4-ED	12	M18X1.5	G1/4-19	31	12	27	19	22	31.5
E7002-12L-G3/8-ED	12	M18X1.5	G3/8-19	31.5	12	27	22	22	31.5
E7002-12L-G1/2-ED	12	M18X1.5	G1/2-14	34	14	28	27	22	31.5
E7002-15L-G3/8-ED	15	M22X1.5	G3/8-19	32.5	12	29	24	27	31.5
E7002-15L-G1/2-ED	15	M22X1.5	G1/2-14	35	14	29	27	27	31.5
E7002-15L-G3/4-ED	15	M22X1.5	G3/4-14	38	16	30	32	27	31.5
E7002-18L-1/2-ED	18	M24X1.5	G1/2-14	36	14	31	27	32	16
E7002-18L-G3/4-ED	18	M30X2	G3/4-14	38	16	31	32	32	16
E7002-22L-G1/2-ED	22	M30X2	G1/2-14	38	14	33	32	36	16
E7002-22L-G3/4-ED	22	M30X2	G3/4-14	40	16	33	32	36	16
E7002-28L-G3/4-ED	28	M36X2	G3/4-14	41	16	34	41	41	16
E7002-28L-G1-ED	28	M36X2	G1-11	43	18	34	41	41	16
E7002-35L-G1-ED	35	M36X2	G1-11	46	18	39	46	50	16
E7002-35L-G11/4-ED	35	M42X2	G11/4-11	48	20	39	50	50	16
E7002-42L-G11/2-ED	42	M52X2	G11/2-11	52	22	42	55	60	16

注：如需带卡套及卡套螺母整套订货，请在型号后加 KN,如：E7002-06L-G1/8-ED/KN



E7002-ED

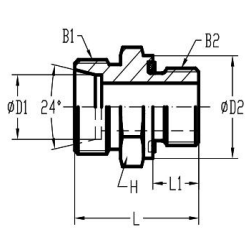


E7002-ED-KN

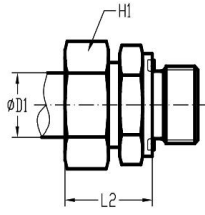
直通 24°锥/BSPP 螺纹胶垫密封柱端
 MALE CONNECTOR 24° CONE/BSPP WITH
 ELASTIC SEAL

型号 PART NO.	外径 TUBE O.D	螺纹 THREAD		尺寸 DIMENSIONS					压力等级 Mpa
	D1	B1	B2	L	L1	L2	H	H1	
E7002-06S-G1/8-ED	06	M14X1.5	G1/8-28	27.5	8	27	14	17	63
E7002-06S-G1/4-ED	06	M14X1.5	G1/4-19	32	12	28	19	17	63
E7002-06S-G3/8-ED	06	M14X1.5	G3/8-19	34.5	12	30	22	17	63
E7002-08S-G1/4-ED	08	M16X1.5	G1/4-19	34	12	30	19	19	63
E7002-08S-G3/8-ED	08	M16X1.5	G3/8-19	34.5	12	30	22	19	63
E7002-08S-G1/2-ED	08	M16X1.5	G1/2-14	39	14	34	27	22	63
E7002-10S-G1/4-ED	10	M18X1.5	G1/4-19	34	12	31	19	22	63
E7002-10S-G3/8-ED	10	M18X1.5	G3/8-19	34.5	12	31	22	22	63
E7002-10S-G1/2-ED	10	M18X1.5	G1/2-14	39	14	34	27	24	63
E7002-12S-G1/4-ED	12	M20X1.5	G1/4-19	36	12	33	22	24	63
E7002-12S-G3/8-ED	12	M20X1.5	G3/8-19	36.5	12	33	22	24	63
E7002-12S-G1/2-ED	12	M20X1.5	G1/2-14	39	14	27	24	24	63
E7002-14S-G1/2-ED	14	M22X1.5	G1/2-14	41	14	37	27	27	63
E7002-16S-G3/8-ED	16	M24X1.5	G3/8-19	38	12	36	24	30	40
E7002-16S-G1/2-ED	16	M24X1.5	G1/2-14	41	14	37	27	30	40
E7002-16S-G3/4-ED	16	M24X1.5	G3/4-14	45	16	39	32	30	40
E7002-20S-G1/2-ED	20	M30X2	G1/2-14	45	14	42	32	36	40
E7002-20S-G3/4-ED	20	M30X2	G3/4-14	47	16	42	32	36	40
E7002-20S-G1-ED	20	M30X2	G1-11	51	18	44	41	36	40
E7002-25S-G3/4-ED	25	M36X2	G3/4-14	51	16	47	41	46	40
E7002-25S-G1/2-ED	25	M36X2	G1/2-14	49	14	47	41	46	40
E7002-25S-G1-ED	25	M36X2	G1-11	53	18	47	41	46	40
E7002-30S-G11/4-ED	30	M42X2	G11/4-11	57	20	50	50	50	40
E7002-30S-G11/2-ED	30	M42X2	G11/2-11	62	22	53	55	50	31.5
E7002-38S-G11/4-ED	38	M52X2	G11/4-11	62	20	57	55	60	31.5
E7002-38S-G11/2-ED	38	M52X2	G11/2-11	64	22	57	55	60	31.5

注：如需带卡套及卡套螺母整套订货，请在型号后加 KN,如：E7002-06S-G1/4-ED/KN



E7005-ED

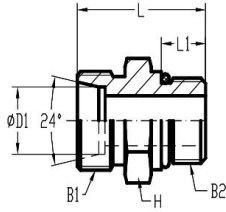


E7005-ED-KN

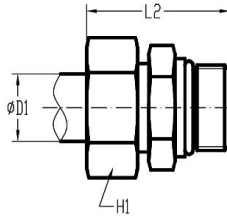
直通 24°锥/米制(M) 螺纹胶垫密封柱端
 MALE CONNECTOR 24° CONE/METRIC WITH
 EOASTIC SEAL

型号 PART NO.	外径 TUBE O.D	螺纹 THREAD		尺寸 DIMENSIONS					压力等级 Mpa
	D1	B1	B2	L	L1	L2	H	H1	
E7005-06L-M10-ED	06	M12X1.5	M10X1	23.5	8	23	14	14	31.5
E7005-08L-M12-ED	08	M14X1.5	M12X1.5	30	12	25	17	17	31.5
E7002-08L-M14-ED	08	M14X1.5	M14X1.5	30	12	25	19	17	31.5
E7005-10L-M14-ED	10	M16X1.5	M14X1.5	30	12	26	19	19	31.5
E7005-10L-M16-ED	10	M16X1.5	M16X1.5	31.5	12	24	22	19	31.5
E7005-12L-M16-ED	12	M18X1.5	M16X1.5	31.5	12	27	22	22	31.5
E7005-12L-M18-ED	12	M18X1.5	M18X1.5	32.5	12	27	24	22	31.5
E7005-15L-M18-ED	15	M22X1.5	M18X1.5	32.5	12	29	24	27	31.5
E7005-15L-M22-ED	15	M22X1.5	M22X1.5	35	14	30	27	27	31.5
E7005-18L-M18-ED	18	M26X1.5	M18X1.5	34	12	30	27	32	31.5
E7005-18L-M20-ED	18	M26X1.5	M20X1.5	36	14	31	27	32	31.5
E7005-18L-M22-ED	18	M26X1.5	M22X1.5	36	14	31	27	32	31.5
E7005-22L-M26-ED	22	M30X2	M26X1.5	40	16	33	32	36	16
E7005-22L-M33-ED	22	M30X2	M33X2	42	18	34	40	36	16
E7005-28L-M33-ED	28	M36X2	M33X2	43	18	34	41	40	16
E7005-35L-M42-ED	35	M45X2	M42X2	48	20	39	50	50	16
E7005-42L-M48-ED	42	M52X2	M48X2	52	22	42	55	60	16
E7005-06S-M12-ED	06	M14X1.5	M12X1.5	32	12	28	17	17	63
E7005-08S-M14-ED	08	M16X1.5	M14X1.5	34	12	30	19	19	63
E7005-10S-M16-ED	10	M18X1.5	M16X1.5	34.5	12	31	22	22	63
E7005-12S-M18-ED	12	M20X1.5	M18X1.5	36.5	12	33	24	24	63
E7005-14S-M20-ED	14	M22X1.5	M20X1.5	41	14	37	27	27	63
E7005-16S-M22-ED	16	M24X1.5	M22X1.5	41	14	37	27	30	40
E7005-20S-M27-ED	20	M30X2	M27X2	47	16	42	32	36	40
E7005-25S-M33-ED	25	M36X2	M33X2	53	18	47	41	46	40
E7005-30S-M42-ED	30	M42X2	M42X2	57	20	50	50	50	40
E7005-38S-M48-ED	38	M52X2	M48X2	64	22	57	55	60	31.5

注：如需带卡套及卡套螺母整套订货，请在型号后加 KN,如：E7005-06L-M10-ED/KN



E6400

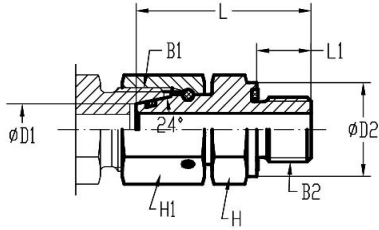


E6400-KN

直通 24°锥/美制螺纹O型圈密封柱端
MALE CONNECTOR 24° CONE/SAE-ORB

型号 PART NO.	外径 TUBE O.D	螺纹 THREAD		尺寸 DIMENSIONS					压力等级 Mpa
	D1	B1	B2	L	L1	L2	H	H1	
E6400-08L-04	08	M14X1.5	7/16-20	26	9.1	25	17	17	31.5
E6400-10L-04	10	M16X1.5	7/16-20	27	9.1	26	17	19	31.5
E6400-12L-06	12	M18X1.5	9/16-18	28	10	26	19	22	31.5
E6400-12L-08	12	M18X1.5	3/4-16	31	11	28	24	22	31.5
E6400-12L-10	12	M18X1.5	7/8-14	34	12.7	29	27	22	31.5
E6400-15L-08	15	M22X1.5	3/4-16	32	11	29	24	27	31.5
E6400-15L-10	15	M22X1.5	7/8-14	35	12.7	30	27	27	31.5
E6400-18L-08	18	M26X1.5	3/4-16	33	11	31	27	32	31.5
E6400-18L-10	18	M26X1.5	7/8-14	35	12.7	31	27	32	31.5
E6400-22L-10	22	M30X2	7/8-14	37	12.7	33	32	36	16
E6400-22L-12	22	M30X2	1-1/16-12	39	15	33	32	36	16
E6400-28L-12	28	M36X2	1-1/16-12	40	15	34	41	41	16
E6400-28L-16	28	M36X2	1-5/16-12	40	15	34	41	41	16
E6400-35L-16	35	M45X2	1-5/16-12	43	15	39	46	50	16
E6400-42L-20	42	M52X2	1-5/8-12	45	15	42	55	60	16
E6400-08S-04	08	M16X1.5	7/16-20	31	9	30	17	19	63
E6400-10S-06	10	M18X1.5	9/16-18	32	10	31	19	22	63
E6400-12S-06	12	M20X1.5	9/16-18	32	10	31	22	24	63
E6400-12S-08	12	M20X1.5	3/4-16	36	11	34	24	24	63
E6400-16S-08	16	M24X1.5	3/4-16	35	11	34	24	30	40
E6400-16S-10	16	M24X1.5	7/8-14	40	12.7	37	27	30	40
E6400-20S-08	20	M30X2	3/4-16	42	11	42	32	36	40
E6400-20S-10	20	M30X2	7/8-14	44	12.7	42	32	36	40
E6400-25S-12	25	M36X2	1-1/16-12	50	15	47	36	46	40
E6400-25S-16	25	M36X2	1-5/16-12	50	15	47	41	46	40
E6400-30S-20	30	M42X2	1-5/8-12	52	15	50	50	50	40
E6400-38S-20	38	M52X2	1-5/8-12	57	15	57	55	60	31.5

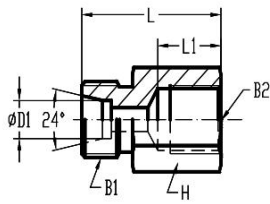
注：如需带卡套及卡套螺母整套订货，请在型号后加 KN,如：E6400-08L-04/KN



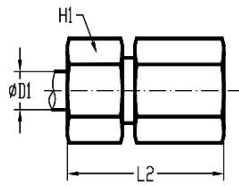
E6402-ED

直通 24°锥 旋转螺帽/BSPP
 螺纹胶垫密封柱端
 FEMALE CONNECTOR 24° CONE
 SWIVEL NUT/BSPP WITH
 EOLASTIS SEAL

型号 PART NO.	外径 TUBE O.D	螺纹 THREAD		尺寸 DIMENSIONS					压力等级 Mpa
	D1	B1	B2	L	L1	L2	H	H1	
E6402-06L-G1/8-ED	06	M12X1.5	G1/8-28	32.5	8	14	14	14	31.5
E6402-08L-G1/4-ED	08	M14X1.5	G1/4-19	41.5	12	19	19	17	31.5
E6402-10L-G1/4-ED	10	M16X1.5	G1/4-19	39.5	12	19	19	19	31.5
E6402-10L-G3/8-ED	10	M16X1.5	G3/8-19	41	12	22	22	19	31.5
E6402-12L-G1/4-ED	12	M18X1.5	G1/4-19	39.5	12	19	19	22	31.5
E6402-12L-G3/8-ED	12	M18X1.5	G3/8-19	43	12	22	22	22	31.5
E6402-12L-G1/2-ED	12	M18X1.5	G1/2-14	45	14	27	27	22	31.5
E6402-15L-G3/8-ED	15	M22X1.5	G3/8-19	44	12	22	22	27	31.5
E6402-15L-G1/2-ED	15	M22X1.5	G1/2-14	46	14	27	27	27	31.5
E6402-18L-G1/2-ED	18	M26X1.5	G1/2-14	46	14	27	27	32	31.5
E6402-18L-G3/4-ED	18	M26X1.5	G3/4-14	45.5	16	32	32	32	16
E6402-22L-G1/2-ED	22	M30X2	G1/2-14	46.5	14	27	30	36	16
E6402-22L-G3/4-ED	22	M30X2	G3/4-14	48.5	16	32	32	36	16
E6402-28L-G1-ED	28	M36X2	G1-11	53	18	40	41	41	16
E6402-35L-G1-1/4-ED	35	M45X2	G1-1/4-11	59.5	20	50	50	50	16
E6402-42L-G1-1/2-ED	42	M52X2	G1-1/2-11	66.5	22	55	55	60	16
E6402-06S-G1/4-ED	06	M14X1.5	G1/4-19	39	12	19	19	17	63
E6402-08S-G1/4-ED	08	M16X1.5	G1/4-19	41.5	12	19	19	19	63
E6402-10S-G3/8-ED	10	M18X1.5	G3/8-19	44	12	22	22	22	63
E6402-12S-G3/8-ED	12	M20X1.5	G3/8-19	46	12	22	22	24	63
E6402-16S-G1/2-ED	16	M24X1.5	G1/2-14	51	14	27	27	30	40
E6402-16S-G3/4-ED	16	M24X1.5	G3/4-14	53	16	32	32	30	40
E6402-20S-G1/2-ED	20	M30X2	G1/2-14	57	14	27	32	36	40
E6402-20S-G3/4-ED	20	M30X2	G3/4-14	59	16	32	32	36	40
E6402-25S-G1-ED	25	M36X2	G1-11	66	18	40	41	46	40
E6402-30S-G1-1/4-ED	30	M42X2	G1-1/4-11	71	20	50	50	50	40
E6402-38S-G1-1/2-ED	38	M52X2	G1-1/2-11	74.5	22	55	55	60	31.5



E2405-G

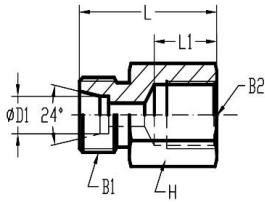


E2405-G-KN

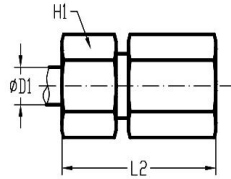
24°锥/BSPP 内螺纹柱端
24° CONE/BSPP FEMALE STUD

型号 PART NO.	外径 TUBE O.D	螺纹 THREAD		尺寸 DIMENSIONS					压力等级 Mpa
	D1	B1	B2	L	L1	L2	H	H1	
E2405-06L-G1/8	06	M12X1.5	G1/8-28	26	12	34	14	14	31.5
E2405-06L-G1/4	06	M12X1.5	G1/4-19	31	17	39	19	14	31.5
E2405-08L-G1/4	08	M14X1.5	G1/4-19	31	17	39	19	17	31.5
E2405-08L-G3/8	08	M14X1.5	G3/8-19	32	17	40	24	17	31.5
E2405-08L-G1/2	08	M14X1.5	G1/2-14	36	20	44	27	17	31.5
E2405-10L-G1/4	10	M16X1.5	G1/4-19	32	17	40	19	19	31.5
E2405-10L-G3/8	10	M16X1.5	G3/8-19	33	17	41	24	19	31.5
E2405-10L-G1/2	10	M16X1.5	G1/2-14	37	20	45	27	19	31.5
E2405-12L-G3/8	12	M18X1.5	G3/8-19	33	17	41	24	22	31.5
E2405-12L-G1/2	12	M18X1.5	G1/2-14	37	20	45	27	22	31.5
E2405-15L-G1/2	15	M22X1.5	G1/2-14	38	20	46	27	27	31.5
E2405-18L-G1/2	18	M26X1.5	G1/2-14	38	20	47	27	32	31.5
E2405-18L-G3/8	18	M26X1.5	G3/8-19	34	17	43	27	32	31.5
E2405-22L-G3/4	22	M30X2	G3/4-14	43	22	52	36	36	16
E2405-28L-G1	28	M36X2	G1-11	45.5	24.5	55	41	41	16
E2405-35L-G1-1/4	35	M45X2	G1-1/4-11	51.5	26.5	63	55	50	16
E2405-42L-G1-1/2	42	M52X2	G1-1/2-11	53.5	28.5	65	60	60	16
E2405-06S-G1/4	06	M14X1.5	G1/4-19	33	17	41	19	17	40
E2405-08S-G1/4	08	M16X1.5	G1/4-19	33	17	41	19	19	40
E2405-10S-G3/8	10	M18X1.5	G3/8-19	34	17	43	24	22	40
E2405-12S-G3/8	12	M20X1.5	G3/8-19	34	17	43	24	24	40
E2405-16S-G1/2	16	M24X1.5	G1/2-14	40	20	50	30	30	40
E2405-20S-G3/4	20	M30X2	G3/4-14	45	22	56	36	36	31.5
E2405-25S-G1	25	M36X2	G1-11	49.5	24.5	62	41	46	31.5
E2405-30S-G1-1/4	30	M42X2	G1-1/4-11	55.5	26.5	69	55	50	31.5
E2405-38S-G1-1/2	38	M52X2	G1-1/2-11	59.5	28.5	74	60	60	25

注：如需带卡套及卡套螺母整套订货，请在型号后加 KN,如：E2405-06L-G1/4/KN



E2406

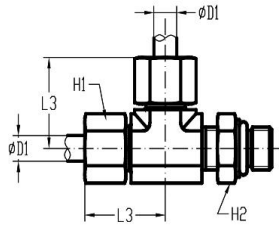


E2406-KN

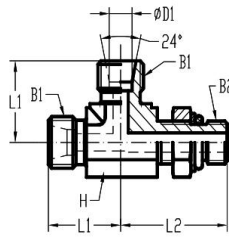
24°锥/米制(M)内螺纹柱端
24° CONE/METRIC FEMALE STUD

型号 PART NO.	外径 TUBE O.D	螺纹 THREAD		尺寸 DIMENSIONS					压力等级 Mpa
	D1	B1	B2	L	L1	L2	H	H1	
E2406-06L-M10	06	M12X1.5	M10X1	26.5	12.5	34	14	14	31.5
E2406-08L-M12	08	M14X1.5	M12X1.5	31	17	39	17	17	31.5
E2406-10L-M14	10	M16X1.5	M14X1.5	32	17	40	19	19	31.5
E2406-12L-M16	12	M18X1.5	M16X1.5	33	17	41	22	22	31.5
E2406-15L-M14	15	M22X1.5	M14X1.5	35	15	43	24	27	31.5
E2406-15L-M18	15	M22X1.5	M18X1.5	35	17	43	24	27	31.5
E2406-18L-M22	18	M26X1.5	M22X1.5	37	19	46	30	32	31.5
E2406-22L-M26	22	M30X2	M26X1.5	42	21	51	32	36	16
E2406-28L-M33	28	M36X2	M33X2	45	24	54	41	41	16
E2406-35L-M42	35	M45X2	M42X2	51	26	62	55	50	16
E2406-42L-M48	42	M52X2	M48X2	53	28	65	60	60	16
E2406-06S-M12	06	M14X1.5	M12X1.5	33	17	41	17	17	40
E2406-08S-M14	08	M16X1.5	M14X1.5	33	17	41	14	19	40
E2406-10S-M16	10	M18X1.5	M16X1.5	34	17	43	22	22	40
E2406-12S-M18	12	M20X1.5	M18X1.5	35	17	44	24	24	40
E2406-14S-M20	14	M22X1.5	M20X1.5	39	19	49	27	27	40
E2406-16S-M22	16	M24X1.5	M22X1.5	39	19	49	30	30	40
E2406-20S-M27	20	M30X2	M27X2	45	22	56	36	36	31.5
E2406-25S-M33	25	M36X2	M33X2	49	24	61	41	46	31.5
E2406-30S-M42	30	M42X2	M42X2	55	26	68	55	50	31.5
E2406-38S-M48	38	M52X2	M48X2	59	28	74	60	60	25

注：如需带卡套及卡套螺母整套订货，请在型号后加 KN,如：E2406-06L-M10/KN



E6804

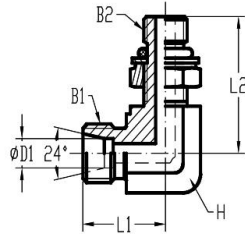


E6804-KN

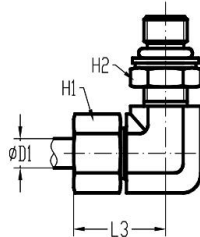
三通 24°锥/美制可调向O型圈密封柱
端/24°锥
ADJUSTABLE LOCKNUT RUN TEE 24°
CONE/SAE-ORB/24° CONE

型号 PART NO.	外径 TUB E O.D	螺纹 THREAD		尺寸 DIMENSIONS						压力等级 Mpa
		D1	B1	B2	L1	L2	L3	H	H1	
E6804-06L-04-06L-NWO	06	M12X1.5	7/16-20	21	29	29	14	14	14	31.5
E6804-08L-04-08L-NWO	08	M14X1.5	7/16-20	23	29	31	14	17	14	31.5
E6804-10L-06-10L-NWO	10	M16X1.5	9/16-18	24	34	32	19	19	17	31.5
E6804-12L-06-12L-NWO	12	M18X1.5	9/16-18	26	36	34	19	22	17	31.5
E6804-12L-08-12L-NWO	12	M18X1.5	3/4-16	26	38	34	19	22	22	31.5
E6804-15L-08-15L-NWO	15	M22X1.5	3/4-16	28	41	36	22	27	22	31.5
E6804-15L-10-15L-NWO	15	M22X1.5	7/8-14	28	43	36	22	27	27	31.5
E6804-18L-10-18L-NWO	18	M26X1.5	7/8-14	31	47	40	27	32	27	31.5
E6804-18L-12-18L-NWO	18	M26X1.5	1-1/16-12	31	49	40	30	32	32	31.5
E6804-22L-12-22L-NWO	22	M30X2	1-1/16-12	35	52	44	30	36	32	16
E6804-28L-16-28L-NWO	28	M36X2	1-5/16-12	38	59	47	36	41	41	16
E6804-35L-20-35L-NWO	35	M45X2	1-5/8-12	48	63	59	50	50	50	16
E6804-42L-24-42L-NWO	42	M52X2	1-7/8-12	49	64	61	50	60	55	16
E6804-06S-04-06S-NWO	06	M14X1.5	7/16-20	22	32	30	14	17	14	40
E6804-08S-04-08S-NWO	08	M16X1.5	7/16-20	24	37	32	19	19	17	40
E6804-10S-06-10S-NWO	10	M18X1.5	9/16-18	25	38	34	19	22	17	40
E6804-12S-08-12S-NWO	12	M20X1.5	3/4-16	29	44	38	22	24	22	40
E6804-16S-10-16S-NWO	16	M24X1.5	7/8-14	33	50	43	27	30	27	40
E6804-20S-12-20S-NWO	20	M30X2	1-1/6-12	38	56	49	30	36	32	40
E6804-25S-16-25S-NWO	25	M36X2	1-5/16-12	42	60	54	36	46	32	40
E6804-30S-20-30S-NWO	30	M42X2	1-5/8-12	49	69	62	50	50	50	25
E6804-38S-24-38S-NWO	38	M52X2	1-7/8-12	50	70	65	50	60	55	25

注：如需带卡套及卡套螺母整套订货，请在型号后加 KN,如：E6804-06L-04-06L-NWO/KN



E7205

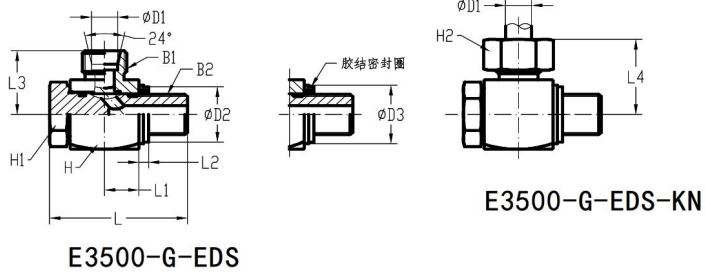


E7205-KN

90°弯 24°锥/米制(M) 螺纹可调向
O型圈密封柱端 ISO 6149
ADJUSTABLE LOCKNUT ELBOW 24°
CONE/METRIC ISO 6149

型号 PART NO.	外径 TUB E O.D	螺纹 THREAD		尺寸 DIMENSIONS						压力等级 Mpa
		D1	B1	B2	L1	L2	L3	H	H1	
E7205-04LL-M8--NWO	04	M8X1	M8X1	15	26.9	21	12	10	12	10
E7205-06LL-M10-NWO	06	M10X1	M10X1	15	26.9	22	14	12	14	10
E7205-06L-M10-NWO	06	M12X1.5	M10X1	21	27	29	14	14	14	31.5
E7205-08L-M12-NWO	08	M14X1.5	M12X1.5	23	32	31	14	17	17	31.5
E7205-08L-M14-NWO	08	M14X1.5	M14X1.5	24	33.5	32	14	17	19	31.5
E7205-08L-M16-NWO	08	M14X1.5	M16X1.5	24	36	32	19	17	22	31.5
E7205-10L-M12-NWO	10	M16X1.5	M12X1.5	22	37	30	19	19	17	31.5
E7205-10L-M16-NWO	10	M16X1.5	M16X1.5	22	37	30	19	19	22	31.5
E7205-10L-M14-NWO	10	M16X1.5	M14X1.5	24	34	32	19	19	19	31.5
E7205-12L-M14-NWO	12	M18X1.5	M14X1.5	26	36	34	19	22	19	31.5
E7205-12L-M16-NWO	12	M18X1.5	M16X1.5	26	37	34	19	22	22	31.5
E7205-12L-M18-NWO	12	M18X1.5	M18X1.5	26	41	34	19	22	24	31.5
E7205-15L-M18-NWO	15	M22X1.5	M18X1.5	28	41	36	22	27	24	31.5
E7205-15L-M22-NWO	15	M22X1.5	M22X1.5	30	45	38	27	27	27	31.5
E7205-18L-M18-NWO	18	M26X1.5	M18X1.5	31	41	40	27	32	24	31.5
E7205-18L-M22-NWO	18	M26X1.5	M22X1.5	31	45	40	27	32	27	31.5
E7205-22L-M27-NWO	22	M30X2	M27X2	35	50	44	30	36	32	16
E7205-28L-M33-NWO	28	M36X2	M33X2	38	51	47	36	41	41	16
E7205-35L-M42-NWO	35	M45X2	M42X2	48	62	59	50	50	50	16
E7205-42L-M48-NWO	42	M52X2	M48X2	49	65	61	50	60	55	16
E7205-08S-M14-NWO	08	M16X1.5	M14X1.5	24	36	32	19	19	19	40
E7205-10S-M16-NWO	10	M18X1.5	M16X1.5	25	39	34	19	22	22	40
E7205-12S-M18-NWO	12	M20X1.5	M18X1.5	29	43	38	22	24	24	40
E7205-16S-M22-NWO	16	M24X1.5	M22X1.5	33	45	43	27	30	24	40
E7205-20S-M27-NWO	20	M30X2	M27X2	38	55	49	30	36	32	40
E7205-25S-M33-NWO	25	M36X2	M33X2	42	53	54	36	46	41	31.5
E7205-30S-M42-NWO	30	M42X2	M42X2	49	68	62	50	50	50	25
E7205-38S-M48-NWO	38	M52X2	M48X2	50	73	65	50	60	55	25

注：如需带卡套及卡套螺母整套订货，请在型号后加 KN，如：E7205-06L-M10-NWO/KN



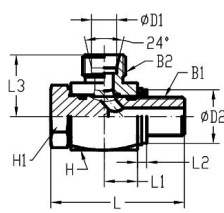
24°锥/BSPP 螺纹铰接EDS端
24° CONE/BSPP BANJO (EDS)

E3500-G-EDS-KN

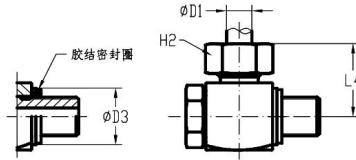
E3500-G-EDS

型号 PART NO.	外径 TUBE O.D	螺纹 THREAD		尺寸 DIMENSIONS								压力 等级 Mpa
		D1	B1	B2	L	L1	L2	L3	L4	H	H1	
E3500-06L-G1/8-EDS	06	M12X1.5	G1/8-28	32	8	2.5	19	27	17	17	14	31.5
E3500-08L-G1/4-EDS	08	M14X1.5	G1/4-19	42	11	3	21.5	29	22	19	17	31.5
E3500-10L-G1/4-EDS	10	M16X1.5	G1/4-19	42	11	3	22.5	30	22	19	19	31.5
E3500-12L-G3/8-EDS	12	M18X1.5	G3/8-19	48	13.5	3	25	33	27	24	22	31.5
E3500-15L-G1/2-EDS	15	M22X1.5	G1/2-14	59	17	4.5	28.5	37	32	30	27	31.5
E3500-18L-G1/2-EDS	18	M26X1.5	G1/2-14	59	17	4.5	28.5	37	32	30	32	31.5
E3500-22L-G3/4-EDS	22	M30X2	G3/4-14	69	20.5	3.5	35	44	41	36	36	16
E3500-28L-G1-EDS	28	M36X2	G1-11	84	27	3.5	39.5	49	50	46	41	16
E3500-35L-G1-1/4-EDS	35	M45X2	G1 1/4-11	96	32	3.5	46.5	58	60	55	50	16
E3500-42L-G1-1/2-EDS	42	M52X2	G1 1/2-11	109	37	3.5	51.5	63	70	60	60	16
E3500-06S-G1/4-EDS	06	M14X1.5	G1/4-19	42	11	3	23.5	31	22	19	17	40
E3500-08S-G1/4-EDS	08	M16X1.5	G1/4-19	42	11	3	23.5	31	22	19	19	40
E3500-10S-G3/8-EDS	10	M18X1.5	G3/8-19	48	13.5	3	26	35	27	24	22	40
E3500-12S-G3/8-EDS	12	M20X1.5	G3/8-19	48	13.5	3	26	35	27	24	24	40
E3500-14S-G1/2-EDS	14	M22X1.5	G1/2-14	60	17	4.5	30.5	40	32	30	27	40
E3500-16S-G1/2-EDS	16	M24X1.5	G1/2-14	60	17	4.5	30.5	40	32	30	30	40
E3500-20S-G3/4-EDS	20	M30X2	G3/4-14	69	20.5	3.5	37	48	41	36	36	25
E3500-25S-G1-EDS	25	M36X2	G1-11	84	27	3.5	43.5	56	50	46	46	25
E3500-30S-G1-1/4-EDS	30	M42X2	G1 1/4-11	96	32	3.5	50.5	64	60	55	50	25
E3500-38S-G1-1/2-EDS	38	M52X2	G1 1/2-11	109	37	3.5	57.5	72	70	60	60	25

注：如需带卡套及卡套螺母整套订货，请在型号后加 KN,如：E3500-06L-G1/8-EDS/KN



E3500-M-EDS

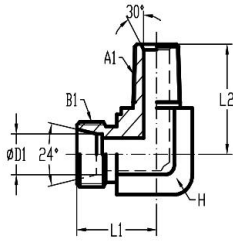


E3500-M-EDS-KN

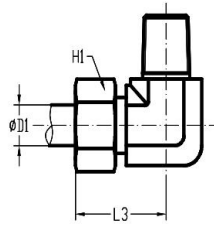
24°锥/米制(M)螺纹铰接EDS端
24° CONE/METRIC BANJO (EDS)

型号 PART NO.	外径 TUB E.O.D	螺纹 THREAD		尺寸 DIMENSIONS								压力 等级 Mpa
	D1	B2	B1	L	L1	L2	L3	L4	H	H1	H2	
E3500-06L-M10-EDS	06	M12X1.5	M10X1	32	8	2.5	19	27	17	17	14	31.5
E3500-08L-M12-EDS	08	M14X1.5	M12X1.5	42	11	3	21.5	29	22	19	17	31.5
E3500-10L-M14-EDS	10	M16X1.5	M14X1.5	42	11	3	22.5	30	22	19	19	31.5
E3500-12L-M16-EDS	12	M18X1.5	M16X1.5	48	13.5	3	25	33	27	24	22	31.5
E3500-15L-M18-EDS	15	M22X1.5	M18X1.5	51	15.5	3	27.5	37	30	30	27	31.5
E3500-18L-M22-EDS	18	M26X1.5	M22X1.5	59	17	4.5	28.5	37	32	30	32	31.5
E3500-22L-M26-EDS	22	M30X2	M26X1.5	69	20.5	3.5	35	44	41	36	36	16
E3500-28L-M33-EDS	28	M36X2	M33X2	84	27	3.5	39.5	49	50	46	41	16
E3500-35L-M42-EDS	35	M45X2	M42X2	96	32	3.5	46.5	58	60	55	50	16
E3500-42L-M48-EDS	42	M52X2	M48X2	109	37	3.5	51.5	63	70	60	60	16
E3500-06S-M12-EDS	06	M14X1.5	M12X1.5	42	11	3	23.5	31	22	19	17	40
E3500-08S-M14-EDS	08	M16X1.5	M14X1.5	42	11	3	23.5	31	22	19	19	40
E3500-10S-M16-EDS	10	M18X1.5	M16X1.5	48	13.5	3	26	35	27	24	22	40
E3500-12S-M18-EDS	12	M20X1.5	M18X1.5	48	13.5	3	26	35	27	24	24	40
E3500-14S-M20-EDS	14	M22X1.5	M20X1.5	60	17	4.5	30.5	40	32	30	27	40
E3500-16S-M22-EDS	16	M24X1.5	M22X1.5	60	17	4.5	30.5	40	32	30	30	40
E3500-20S-M27-EDS	20	M30X2	M27X2	69	20.5	3.5	37	48	41	36	36	25
E3500-25S-M33-EDS	25	M36X2	M33X2	84	27	3.5	43.5	56	50	46	46	25
E3500-30S-M42-EDS	30	M42X2	M42X2	96	32	3.5	50.5	64	60	55	50	25
E3500-38S-M48-EDS	38	M52X2	M48X2	109	37	3.5	57.5	72	70	60	60	25

注：如需带卡套及卡套螺母整套订货，请在型号后加 KN,如：E3500-06L-M10-EDS/KN



E2501

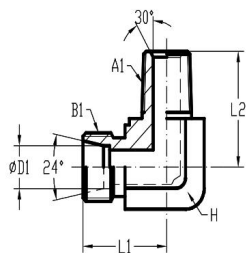


E2501-KN

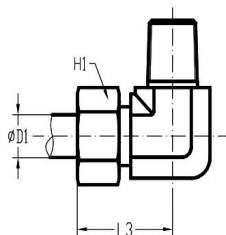
90°弯外螺纹 24°锥/NPTF螺纹
MALE 90° ELBOW 24° CONE/NPTF THREAD

型号 PART NO.	外径 TUBE O.D	螺纹 THREAD		尺寸 DIMENSIONS					压力等级 Mpa
	D1	B1	A1 NPT	L	L1	L2	H	H1	
E2501-04LL-1/8NPT	04	M8X1	1/8-27	15	17	21	9	10	10
E2501-06LL-1/8NPT	06	M10X1	1/8-27	15	17	21	9	12	10
E2501-08LL-1/8NPT	08	M12X1	1/8-27	17	20	23	12	14	10
E2501-06L-1/8NPT	06	M12X1.5	1/8-27	19	20	27	12	14	31.5
E2501-06L-1/4NPT	06	M12X1.5	1/4-18	21	26	29	12	14	31.5
E2501-08L-1/8NPT	08	M14X1.5	1/8-27	21	26	29	12	17	31.5
E2501-08L-1/4NPT	08	M14X1.4	1/4-18	21	26	29	12	17	31.5
E2501-10L-1/4NPT	10	M16X1.5	1/4-18	22	27	30	17	19	31.5
E2501-10L-3/8NPT	10	M16X1.5	3/8-18	24	28	32	17	19	31.5
E2501-12L-1/4NPT	12	M18X1.4	1/4-18	24	28	32	17	22	31.5
E2501-12L-3/8NPT	12	M18X1.5	3/8-18	24	28	32	17	19	31.5
E2501-15L-1/2NPT	15	M22X1.5	1/2-14	28	34	36	19	27	31.5
E2501-18L-1/2NPT	18	M26X1.5	1/2-14	31	36	40	24	32	31.5
E2501-22L-3/4NPT	22	M30X2	3/4-14	35	42	44	27	36	16
E2501-28L-1NPT	28	M36X2	1-11.5	38	48	47	36	41	16
E2501-35L-1-1/4NPT	35	M45X2	1 1/4-11.5	45	54	56	41	50	16
E2501-42L-1-1/2NPT	42	M52X2	1 1/2-11.5	51	61	63	50	60	16
E2501-06S-1/4NPT	06	M14X1.5	1/4-18	23	26	31	12	17	63
E2501-08S-3/8NPT	08	M16X1.5	3/8-18	25	28	33	17	19	63
E2404-10S-3/8NPT	10	M18X1.5	3/8-18	25	28	34	17	22	63
E2501-12S-3/8NPT	12	M20X1.5	3/8-18	29	28	38	17	24	63
E2501-16S-1/2NPT	16	M24X1.5	1/2-14	33	36	43	24	30	40
E2501-20S-3/4NPT	20	M30X2	3/4-14	37	42	48	27	36	40
E2501-25S-1NPT	25	M36X2	1-11.5	42	48	54	36	46	40
E2501-30S-1-1/4NPT	30	M45X2	1 1/4-11.5	49	54	62	41	50	40
E2501-38S-1-1/2NPT	38	M52X2	1 1/2-11.5	57	61	72	50	60	31.5

注：如需带卡套及卡套螺母整套订货，请在型号后加 KN,如：E2501-06L-1/8NPT/KN



E7200

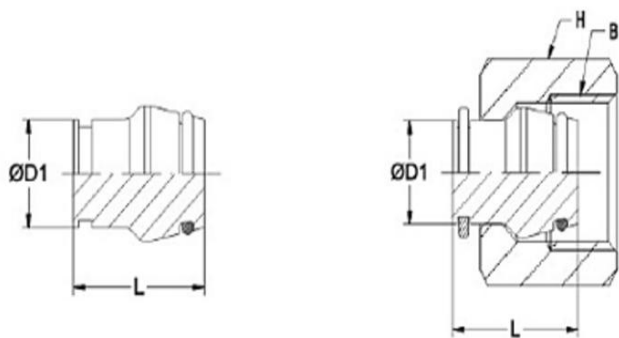


E7200-KN

90°弯外螺纹 24°锥/BSPT 螺纹
MALE 90° ELBOW 24° CONE/BSPT THREAD

型号 PART NO.	外径 TUBE O.D	螺纹 THREAD		尺寸 DIMENSIONS					压力等级 Mpa
	D1	B1	A1 BSPT	L	L1	L2	H	H1	
E7200-04LL-R1/8	04	M8X1	1/8-28	15	17	21	9	10	10
E7200-06LL-R1/8	06	M10X1	1/8-28	15	17	21	9	12	10
E7200-08LL-R1/8	08	M12X1	1/8-28	17	20	23	12	14	10
E7200-06L-R1/8	06	M12X1.5	1/8-28	19	20	27	12	14	31.5
E7200-06L-R1/4	06	M12X1.5	1/4-19	21	26	29	12	14	31.5
E7200-08L-R1/4	08	M14X1.5	1/4-19	21	26	29	12	17	31.5
E2501-08L-R1/8	08	M14X1.4	1/8-28	21	26	29	12	17	31.5
E7200-08L-R3/8	10	M14X1.5	3/8-19	24	28	32	17	17	31.5
E7200-10L-R1/4	10	M16X1.5	1/4-19	22	27	30	14	19	31.5
E7200-10L-R3/8	12	M16X1.4	3/8-19	24	28	32	17	19	31.5
E7200-12L-R3/8	12	M18X1.5	3/8-19	24	28	32	17	22	31.5
E7200-12L-R1/4	15	M18X1.5	1/4-19	24	27	32	17	22	31.5
E7200-12L-R1/2	18	M18X1.5	1/2-14	28	34	36	19	22	31.5
E7200-15L-R1/2	22	M22X1.5	1/2-14	28	34	36	19	27	31.5
E7200-18L-R1/2	28	M26X1.5	1/2-14	31	36	40	24	32	31.5
E7200-06S-R1/4	35	M14X1.5	1/4-19	23	26	31	12	17	40
E7200-06S-R3/8	06	M14X1.5	3/8-19	25	28	33	17	17	40
E7200-08S-R1/4	08	M16X1.5	1/4-19	24	27	32	14	19	40
E7200-08S-R3/8	10	M16X1.5	3/8-19	25	28	33	17	19	40
E7200-10S-R3/8	12	M18X1.5	3/8-19	25	28	34	17	22	40
E7200-10S-R1/4	16	M18X1.5	1/4-19	25	28	34	17	22	40
E7200-12S-R3/8	20	M20X1.5	3/8-19	29	28	38	17	24	40
E7200-12S-R1/2	25	M20X1.5	1/2-14	30	32	39	19	24	40
E7200-14S-R1/2	30	M22X1.5	1/2-14	30	32	40	19	27	40
E7200-16S-R1/2	38	M24X1.5	1/2-14	33	32	43	24	30	40

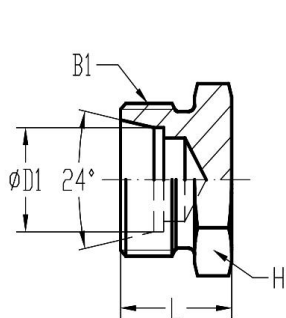
注：如需带卡套及卡套螺母整套订货，请在型号后加 KN,如：E7200-06L-R1/8/KN

**E0304-P****E0304-P-N**

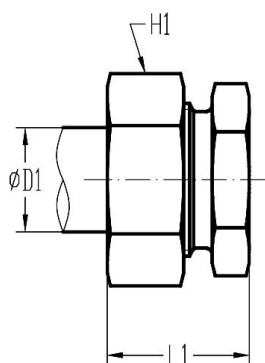
公制24° 锥堵塞
24° CONE CAP

型号 PART NO.	外径 TUBE O.D	螺纹 THREAD	尺寸 DIMENSIONS		压力等级 Mpa
	D1	B	L	H	
E0304-P-06L	06	M12X1.5	18.6	14	31.5
E0304-P-08L	08	M14X1.5	18.5	14	31.5
E0304-P-10L	10	M16X1.5	20.1	19	31.5
E0304-P-12L	12	M18X1.5	20.6	22	31.5
E0304-P-15L	15	M22X1.5	20.5	27	31.5
E0304-P-18L	18	M26X1.5	22.6	32	31.5
E0304-P-22L	22	M30X2	25.1	36	16
E0304-P-28L	28	M36X2	25.5	41	16
E0304-P-35L	35	M45X2	30	50	16
E0304-P-42L	42	M52X2	30	60	16
E0304-P-06S	06	M14X1.5	18.5	17	63
E0304-P-08S	08	M16X1.5	18.5	19	63
E0304-P-10S	10	M18X1.5	20	22	63
E0304-P-12S	12	M20X1.5	20.5	24	63
E0304-P-14S	14	M22X1.5	22.5	27	63
E0304-P-16S	16	M24X1.5	23.5	30	40
E0304-P-20S	20	M30X2	28.5	36	40
E0304-P-25S	25	M36X2	29	46	40
E0304-P-30S	30	M42X2	30.5	50	40
E0304-P-38S	38	M52X2	33	60	31.5

注：如需带卡套及卡套螺母整套订货，请在型号后加 KN,如：E0304-P-06L/KN



E2408

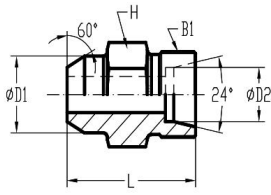


E2408-KN

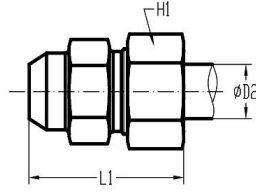
24°锥堵头
PLUG 24° CONE

型号 PART NO.	外径 TUBE O.D	螺纹 THREAD	尺寸 DIMENSIONS				压力等级 Mpa
	D1		B	L	L1	H	
E2408-06L	06	M12X1.5	14	22	12	14	31.5
E2408-08L	08	M14X1.5	15	23	14	17	31.5
E2408-10L	10	M16X1.5	16	24	17	19	31.5
E2408-12L	12	M18X1.5	17	25	19	22	31.5
E2408-15L	15	M22X1.5	18	26	24	27	31.5
E2408-18L	18	M26X1.5	19	28	27	32	31.5
E2408-22L	22	M30X2	21	30	32	36	16
E2408-28L	28	M36X2	22	31	41	41	16
E2408-35L	35	M45X2	25	36	46	50	16
E2408-42L	42	M52X2	27	39	55	60	16
E2408-06S	06	M14X1.5	18	26	14	17	63
E2408-08S	08	M16X1.5	20	28	17	19	63
E2408-10S	10	M18X1.5	20	29	19	22	63
E2408-12S	12	M20X1.5	22	31	22	24	63
E2408-16S	16	M24X1.5	24	34	27	30	40
E2408-20S	20	M30X2	28	39	32	36	40
E2408-25S	25	M36X2	32	44	41	46	40
E2408-30S	30	M42X2	34	47	46	50	40
E2408-38S	38	M52X2	39	54	55	60	31.5

注：如需带卡套及卡套螺母整套订货，请在型号后加 KN,如：E2408-06L/KN



E0402

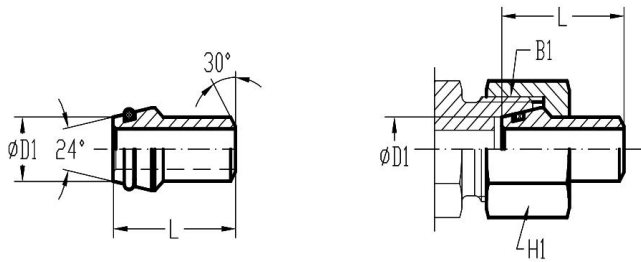


E0402-KN

焊接连接件 焊接端口/24°锥
WELD CONNECTOR BUTT
WELD/24° CONE

型号 PART NO.	外径 TUBE O.D		螺纹 THREAD	尺寸 DIMENSIONS				压力等级 Mpa
	D1	D2	B1	L	L1	H	H1	
E0402-06L	10	06	M12X1.5	21	29	12	14	31.5
E0402-08L	12	08	M14X1.5	23	31	14	17	31.5
E0402-10L	14	10	M16X1.5	25	33	17	19	31.5
E0402-12L	16	12	M18X1.5	25	33	19	22	31.5
E0402-15L	19	15	M22X1.5	29	37	22	27	31.5
E0402-18L	22	18	M26X1.5	31	40	27	32	31.5
E0402-22L	27	22	M30X2	36	45	32	36	16
E0402-28L	32	28	M36X2	38	47	41	41	16
E0402-35L	40	35	M45X2	43	54	46	50	16
E0402-42L	46	42	M52X2	46	58	55	60	16
E0402-06S	11	06	M14X1.5	26	34	14	17	63
E0402-08S	13	08	M16X1.5	28	36	17	19	63
E0402-10S	15	10	M18X1.5	30	39	19	22	63
E0402-12S	17	12	M20X1.5	32	41	22	24	63
E0402-14S	19	14	M22X1.5	35	45	24	27	63
E0402-16S	21	16	M24X1.5	35	45	27	30	40
E0402-20S	26	20	M30X2	40	51	32	36	40
E0402-25S	31	25	M36X2	44	56	41	46	40
E0402-30S	36	30	M42X2	49	62	46	50	40
E0402-38S	44	38	M52X2	54	69	55	60	31.5

注：如需带卡套及卡套螺母整套订货，请在型号后加 KN,如：E0402-06L/KN



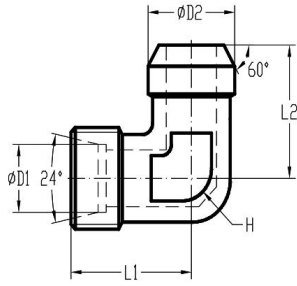
24°锥/焊接端口
WELD NIPPLE 24°
CONE/BUTT WELD

E0405

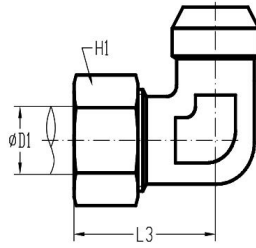
E0405-N

型号 PART NO.	外径 TUBE O.D	螺纹 THREAD	尺寸 DIMENSIONS		压力等级 Mpa
	D1	B1	L	H1	
E0405-06L-6x1.5	06	M12X1.5	31	14	52.8
E0405-08L-8x1.5	08	M14X1.5	31	17	41.4
E0405-10L-10x1.5	10	M16X1.5	32.5	19	35.8
E0405-10L-10x2	10	M16X1.5	32.5	19	46
E0405-12L-12x1.5	12	M18X1.5	32.5	22	30.5
E0405-12L-12x2	12	M18X1.5	32.5	22	39.3
E0405-15L-15x2	15	M22X1.5	34	27	31.5
E0405-15L-15x2.5	15	M22X1.5	34	27	31.5
E0405-18L-18x2.5	18	M26X1.5	35.5	32	31.5
E0405-22L-22x2.5	22	M30X2	38.5	36	16
E0405-28L-28x2.5	28	M36X2	41.5	41	16
E0405-35L-35x4	35	M45X2	47.5	50	16
E0405-42L-42x3	42	M52X2	47.5	60	16
E0405-42L-42x4	42	M52X2	47.5	60	16
E0405-06S-6x1.5	06	M14X2	31	17	52.8
E0405-08S-8x1.5	08	M16X1.5	31	19	41.4
E0405-08S-8x2	08	M16X1.5	31	19	52.8
E0405-10S-10x1.5	10	M18X1.5	32.5	22	35.8
E0405-10S-10x2	10	M18X1.5	32.5	22	46
E0405-12S-12x1.5	12	M20X1.5	32.5	24	30.5
E0405-12S-12x2	12	M20X1.5	32.5	24	39.3
E0405-16S-16x2	16	M24X1.5	39	30	30.5
E0405-16S-16x2.5	16	M24X1.5	39	30	37.2
E0405-20S-20x3	20	M30X2	45	36	35.8
E0405-25S-25x3	25	M36X2	49.5	46	29.4
E0405-30S-30x4	30	M42X2	52	50	32.3
E0405-38S-38x4	38	M52X2	56.6	60	31.5

注：如需带卡套及卡套螺母整套订货，请在型号后加 KN,如：E0405-06L-6X1.5/KN



E0520

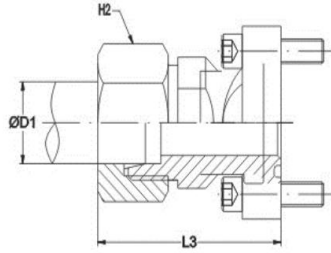
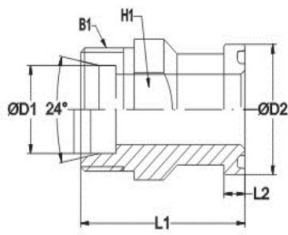


E0520-KN

90°弯 24°锥/焊接端口
90° ELBOW WELD CONNECTOR
24° CONE/BUTT WELD

型号 PART NO.	外径 TUBE O.D		螺纹 THREAD	尺寸 DIMENSIONS					压力等级 Mpa
	D1	D2	B1	L1	L2	L3	H	H1	
E0520-06L-06L	06	10	M12X1.5	19	19	27	12	14	31.5
E0520-08L-08L	08	12	M14X1.5	21	23	29	12	17	31.5
E0520-10L-10L	10	14	M16X1.5	22	24	30	14	19	31.5
E0520-12L-12L	12	16	M18X1.5	24	25	32	17	22	31.5
E0520-15L-15L	15	19	M22X1.5	28	30	36	19	27	31.5
E0520-18L-18L	18	22	M26X1.5	31	33	40	24	32	31.5
E0520-22L-22L	22	27	M30X2	35	37	44	27	36	16
E0520-28L-28L	28	32	M36X2	38	42	47	36	41	16
E0520-35L-35L	35	40	M45X2	45	49	56	41	50	16
E0520-42L-42L	42	46	M52X2	51	57	63	50	60	16
E0520-06S-06S	06	11	M14X1.5	23	23	31	12	17	63
E0520-08S-08S	08	13	M16X1.5	24	24	32	14	19	63
E0520-10S-10S	10	15	M18X1.5	25	25	34	17	22	63
E0520-12S-12S	12	17	M20X1.5	29	29	38	17	24	63
E0520-14S-14S	14	19	M22X1.5	30	30	40	19	27	63
E0520-16S-16S	16	21	M24X1.5	33	33	43	24	30	40
E0520-20S-20S	20	26	M30X2	37	37	48	27	36	40
E0520-25S-25S	25	31	M36X2	42	42	54	36	46	40
E0520-30S-30S	30	36	M42X2	49	49	62	41	50	40
E7200-38S-38S	38	44	M52X2	57	57	72	50	60	31.5

注：如需带卡套及卡套螺母整套订货，请在型号后加 KN,如：E0520-06L-06/KN



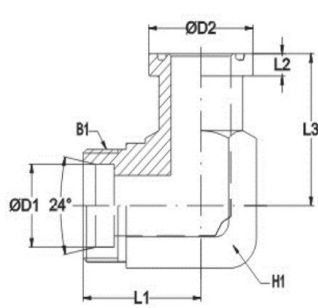
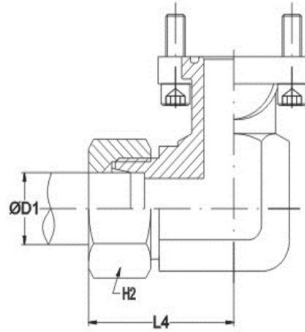
直通 24° 锥/SAE 法兰(61型)
STRAIGHT 24° CONE/
SAE FLANGE (CODE 61)

E1700

E1700-KN/1991-M

型号 PART NO.	外径 TUBE O.D		螺纹 THREAD	尺寸 DIMENSIONS					压力等级 Mpa
	D1	D2		B1	L1	L2	L3	H	
E1700-15L-08	15	30.2	M22X1.5	48	6.7	56	24	27	31.5
E1700-18L-08	18	30.2	M26X1.5	50	6.7	61	29	32	31.5
E1700-18L-12	18	38.1	M26X1.5	53	6.7	62	30	32	31.5
E1700-22L-12	22	38.1	M30X2	53	6.7	62	30	36	16
E1700-28L-12	28	38.1	M36X2	53	6.7	62	30	41	16
E1700-28L-16	28	44.5	M36X2	54	8	63	36	41	16
E1700-28L-20	28	50.8	M36X2	58	8	67	36	41	16
E1700-35L-20	35	50.8	M45X2	58	8	69	41	41	16
E1700-35L-24	35	60.3	M45X2	65	8	76	46	46	16
E1700-42L-24	42	60.3	M52X2	65	8	76	46	46	16
E1700-16S-08	16	30.2	M24X1.5	50	6.7	60	24	30	35
E1700-16S-12	16	38.1	M24X1.5	55	6.7	65	27	30	35
E1700-20S-12	20	38.1	M30X2	57	6.7	68	30	36	35
E1700-20S-16	20	44.5	M30X2	60	8	71	32	36	35
E1700-25S-12	25	38.1	M36X2	57	6.7	69	30	36	35
E1700-25S-16	25	44.5	M36X2	58	8	60	36	46	35
E1700-25S-20	25	50.8	M36X2	60	8	72	41	46	20
E1700-30S-16	30	44.5	M42X2	63	8	76	41	50	25
E1700-30S-20	30	50.8	M42X2	62	8	75	41	50	20
E1700-38S-20	30	50.8	M52X2	66	8	81	46	60	20
E1700-38S-24	38	60.3	M52X2	70	8	85	46	60	20

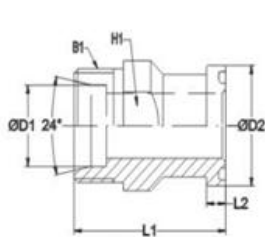
注：如需带卡套及卡套螺母整套订货，请在型号后加 KN,如：E1700-15L-08/KN

**E1704****E1704-KN/1991-M**

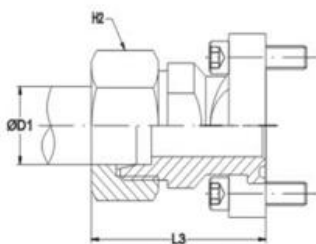
90° 弯 24° 锥/SAE 法兰(61型)
90° ELBOW 24° CONE/
SAE FLANGE(CODE 61)

型号 PART NO.	外径 TUBE O.D		螺纹 THREAD	尺寸 DIMENSIONS					压力等级 Mpa
	D1	D2		B1	L1	L2	L3	H	
E1704-12S-08	12	30.2	M20X1.5	50	6.7	44	22	24	21
E1704-15L-08	15	30.2	M22X1.5	36	6.7	36	24	27	31.5
E1704-16S-08	16	30.2	M24X1.5	38	6.7	36	24	30	35
E1704-18L-08	18	38.1	M26X1.5	50	6.7	44	22	32	31.5
E1704-16S-12	16	38.1	M24X1.5	64	6.7	53	27	30	35
E1704-18L-12	18	38.1	M26X1.5	39	6.7	42	30	32	31.5
E1704-22L-12	22	38.1	M30X2	41	6.7	42	30	36	16
E1704-20S-12	20	38.1	M30X2	43	6.7	42	30	36	35
E1704-25S-12	25	38.1	M36X2	45	6.7	42	30	46	35
E1704-20S-16	20	44.5	M30X2	65	8	60	34	36	35
E1704-22L-16	22	44.5	M30X2	65	8	60	34	36	16
E1704-28L-16	28	44.5	M36X2	44	8	45	41	41	16
E1704-25S-16	25	44.5	M36X2	48	8	45	41	46	35
E1704-30S-16	30	44.5	M42X2	50	8	45	41	50	25
E1704-35L-20	35	50.8	M45X2	57	8	50	41	50	16
E1704-25S-20	25	50.8	M36X2	55	8	60	41	46	20
E1704-30S-20	30	50.8	M42X2	57	8	50	41	50	20
E1704-38S-20	38	50.8	M52X2	59	8	50	46	60	20
E1704-35L-24	35	60.3	M45X2	78	8	66	50	50	16
E1704-38S-24	38	60.3	M52X2	64	8	55	60	60	20
E1704-42L-24	42	60.3	M52X2	58	8	50	60	60	16

注：如需带卡套及卡套螺母整套订货，请在型号后加 KN,如：E1704-15L-08/KN



E1800

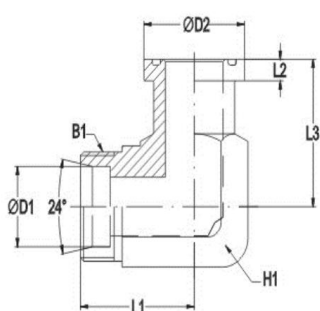
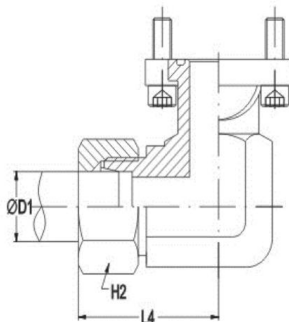


E1800-KN/1992-M

直通 24° 锥/SAE 法兰(62型)
STRAIGHT 24° CONE/
SAE FLANGE (CODE 62)

型号 PART NO.	外径 TUBE O.D		螺纹 THREAD	尺寸 DIMENSIONS					压力等级 Mpa
	D1	D2		B1	L1	L2	L3	H	
E1800-12S-08	12	31.8	M20X1.52	50	7.7	57	19	24	42
E1800-14S-08	14	31.8	M22X1,5	50	7.7	59	19	27	42
E1800-16S-08	16	31.8	M24X1.5	53	7.7	63	24	30	42
E1800-16S-12	16	41.3	M24X1.5	59	8.7	69	30	30	42
E1800-20S-12	20	41.3	M30X2	61	8.7	72	30	36	40
E1800-25S-12	25	41.3	M36X2	63	8.7	75	30	46	40
E1800-30S-12	30	41.3	M42X2	76	8.7	90	30	50	40
E1800-20S-16	20	47.6	M30X2	75	9.5	88	36	36	40
E1800-25S-16	25	47.6	M36X2	72	9.5	84	36	46	40
E1800-30S-16	30	47.6	M42X2	74	9.5	87	36	50	40
E1800-25S-20	25	54	M36X2	80	10.2	90	41	46	40
E1800-30S-20	30	54	M42X2	79	10.2	92	41	50	40
E1800-38S-20	38	54	M52X2	83	10.2	98	46	60	31.5
E1800-30S-24	30	63.5	M42X2	90	12.5	98	46	50	40
E1800-38S-24	38	63.5	M52X2	89	12.5	104	46	60	31.5

注：如需带卡套及卡套螺母整套订货，请在型号后加 KN，如：E1800-12S-08/KN

**E1804****E1804-KN/1992-M**

90° 弯 24° 锥/SAE 法兰(62型)
90° ELBOW 24° CONE/
SAE FLANGE (CODE 62)

型号 PART NO.	外径 TUBE O.D		螺纹 THREAD	尺寸 DIMENSIONS					压力等级 Mpa
	D1	D2		B1	L1	L2	L3	H1	
E1804-12S-08	12	31.8	M20X1.52	50	7.7	44	22	24	42
E1804-14S-08	14	31.8	M22X1,5	50	7.7	44	22	27	42
E1804-16S-08	16	31.8	M24X1.5	38	7.7	39	24	30	42
E1804-16S-12	16	41.3	M24X1.5	45	8.7	48	32	30	42
E1804-20S-12	20	41.3	M30X2	46	8.7	48	32	36	40
E1804-25S-12	25	41.3	M36X2	48	8.7	48	32	46	40
E1804-20S-16	20	47.6	M30X2	62	9.5	60	34	36	40
E1804-25S-16	25	47.6	M36X2	53	9.5	60	41	46	40
E1804-30S-16	30	47.6	M42X2	55	9.5	60	41	50	40
E1804-25S-20	25	54	M36X2	72	10.2	70	42	46	40
E1804-30S-20	30	54	M42X2	58	10.2	68	46	50	40
E1804-38S-20	38	54	M52X2	61	10.2	68	46	60	31.5
E1804-30S-24	30	63.5	M42X2	30	12.5	77	50	50	40
E1804-38S-24	38	63.5	M52X2	38	12.5	76	50	60	31.5

注：如需带卡套及卡套螺母整套订货，请在型号后加 KN,如：E1804-12S-08/KN